

Lodestar

The Friendly Federation ★ Founded to Serve



The Southeast Federation of Mineralogical Societies, Inc.

Volume XXX/Eight

October 2005

UPCOMING FIELD TRIPS

October 15, 2005: LaFarge Cement Quarry, Harleyville, SC. Hosts: Lowcountry Gem and Mineral Society. Eocene marine fossils including: scallops, oysters, brachiopods, echinoids, shark and ray teeth, etc. Must commit to attending by October 9th - Limited to first 50 to commit.

November 5, 2005: Nantahala Talc and Limestone Quarry, Hewitt, NC. Hosts: Southern Appalachian Mineral Society. Banded pink, gray and yellow marble, calcite, dolomite, pyrite, travertine and talc.

"Field trips are open to all members of associated clubs of the DMC program of the SFMS Field Trip Committee and to all members of SFMS member clubs who have provided their membership with SFMS liability insurance. Because of insurance requirements, members of the GENERAL PUBLIC are NOT invited on this or any DMC program field trips!"



PRESIDENT'S MESSAGE

Well, what a month of tragedy and concerns! Tragedy for the people who suffered through Hurricane Katrina, and again with Hurricane Rita. I have heard from a few of our members, Arthur and

Doris Mott in New Orleans, John and Billie Wright in Ocean Springs, they are all doing well. Buddy and Reba Shotts keep in touch whilst they spend their time driving FEMA trailers, with supplies from way up north to those in need in Mississippi and Louisiana. Our sincere thanks to them both for taking on this strenuous role and helping those in need.

If anyone knows the whereabouts of any of our members that have been displaced, please convey information through the State Directors, or directly to me. We would like to know that all our members are in a safe place. Please let us know if any members require assistance, through these channels, or by contacting, Jim Flora and he will post the information on our web site.

I sincerely hope that by the time of our Annual meeting in Melbourne, Florida that many of the difficulties and problems will be resolved. I hope to see as many of our friends as possible at this meeting.

Remember this is the year of the review of our Constitution and By-laws. We need your input. My thanks to the members of the ad hoc Constitution and Bylaws committee for all their dedication and hard work. Olin Banks, Don Monroe and Betty James have given unselfishly of their time and expertise to produce these proposed changes. Let us all thank them, by giving our due consideration to the proposals posted in the September issue of the *Lodestar*.

*Looking forward to a calm and beautiful Fall,
yours in friendship,
Eileen Price, SFMS President*

DEADLINE EXTENDED!

The deadline for submittal of the application for competitive exhibits at the SFMS Annual Meeting in Melbourne, Florida has been extended from October 1 to November 1, 2005.

Please consider entering an exhibit for competition. To date, there have been no entries. See page 15 of this issue of *Lodestar* for an application.

*from a conversation with Roy Deer,
Canaveral Mineral and Gem Society*

Inside this Issue:

SFMS Officers, Committee Chairmen, Etc.	2
Editor's Ramblings	3
Take Your Kids Surfing on the Web	3
Club Role in Scholarship Awards	3
Show Cancellation	3
MEFI Donation Form	4
Be Safe - Be Well	5
A Field Trip to Woodbury	5
Passing of a Generation	5
SFMS Officer and Committee Reports (cancelled September Board Meeting)	6
Ft. Drum Crystal Mine Rock Swap/Field Trip	12
2005 SFMS Annual Show Information	13
2005 SFMS Annual Show Registration Form	14
2005 SFMS Annual Show Competitive Exhibit Application	15
Looking Ahead	16
Actual Analogies, Similes and Metaphors Appearing in High School Essays	17
Subscription Form	18

THE SOUTHEAST FEDERATION OF MINERALOGICAL SOCIETIES, INC.



A Non-Profit, Non-Commercial, Non-Political Organization and Regional Federation of the American Federation of Mineralogical Societies



PURPOSE:

To bring about a closer association of Clubs and Societies devoted to the study of Earth Sciences and the practice of Lapidary Arts and Crafts in the Southeast part of the United States.

OBJECTIVE:

To cooperate with similar Federations to promote public interest in the Earth Sciences and the conservation of natural resources.

2005 SFMS Officers

President	Eileen Price	865.694.4071 rfemprice@yahoo.com
1st Vice President	Ann Monroe	204.591.5632 acmonroe@bellsouth.net
2nd Vice President	Buddy Shotts	601.947.7245 buddys@datasync.com
Secretary	Betty James	601.914.6747 mineralid@jam.rr.com
Membership Secretary	Leo Morris	770.445.9274 membership4198@yahoo.com
Treasurer	Ken Anderson	803.547.5147 27k.da66@rjsonline
Assistant Treasurer	David Katt	540.483.0823 dkitkatt@direcway.com
Editor	Carolyn Daniels	770.723.1359 dpdaniels@mindspring.com
Immediate Past President	Bill Waggener	404.355.7377 wgwaggenerii@bellsouth.net
AFMS President-Elect	Jim Robinson	904.221.5038 jhr30@netzero.net
President-Mayo Education Foundation	Diane Dare	727.937.8080

2005 SFMS State Directors

AL	Iris McGehee	334.262.7275	irisjmcg@aol.com
FL	Beryl Ferguson	386.677.1049	crossbowcreation@aol.com
GA	Anita Westlake	404.761.7849	libawc@emory.edu
KY	David Horn	502.426.4457	crystalman@earthlink.net
LA	Arthur Mott	504.737.0259	arthurmott@att.net
MS		Vacant	
NC	Mike Streeter	828.667.8260	mcstreeter@charter.net
SC	Fred Sias	864.654.6833	sfmsedchair@mindspring.com
TN	Marty Hart	615.331.2690	webmaster@gemizo.com
VA	Steve Gordon	434.929.1524	ssdtgordon@aol.com

2005 SFMS Committee Chairman

Nominations	Bill Waggener	404.355.7377 wgwaggenerii@bellsouth.net
Long Range Planning	John Wright	228.875.9192 osibw@datasync.com
Bulletin Contest	Anna Denton	706.569.1219 AnnaDenton@Excite.com
Constitution/By-Laws	Robert (Red) Walker	423.369.3077 walkervv@highland.net
Field Trips	Jim Flora	706.896.8040 jimflora@alltel.net
Education	Fred Sias	864.654.6833 sfmsedchair@mindspring.com
Historian	Charlotte Mayo Bryant	706.278.8344
Insurance Liason (Acting)	Ken Anderson	803.547.5147 27k.da66@rjsonline.net
Publications Safety	Open To A Volunteer Don Monroe	204.591.5632 donmonroe@bellsouth.net
Slide/Video Programs	Freda Hull	321.725.0847 freehull@juno.com
Social Concerns	Edna Morris	770.445.9274 memship4198@yahoo.com
Stamp Program	Jim Robinson	904.221.5038 jhr30@netzero.net
Supplies	Reba Shotts	601.947.7245 rholland@datasync.com
Uniform Rules	Flora Walker	423.369.3077 floralee@highland.net
Ways & Means	Frank Decaminada	770.992.8309 carrie128@comcast.net
Youth Resources	Hugh & Leona Sheffield	727.894.2440
2005 Annual Meeting Hosts	William Harr Christine Miller	321.480.0375 321-952-9647 chrstnmlr@aol.com
	Leslie Wayment	772-581-0698 leslie@wayment.com
Wildacres Directors	David & Barbara Tuttle	904.225.0689 dt@net-magic.net
Wildacres Registrars	Kerri & Bill Wetzel	864.306.6749 wwetzel@earthlink.net
Wm. Holland Director	Pat Davis	727.323.2147 rocksnbeads@hotmail.com
Wm. Holland Registrars	Dana & Ray Gonzalez	706.327.4474 drq@mchsi.com

2005 MAYO FOUNDATION Officers/Directors

President	Diane Dare	727.937.8080
Vice President	Eileen Price	865.694.4071 rfemprice@yahoo.com
Treasurer	Frank Decaminada	770.992.8309 carrie128@comcast.net
SFMS Education Chair	Fred Sias	864.654.6833 sfmsedchair@mindspring.com
Secretary	Ron Denton	706.569.1219 rondenton@earthlink.net
Director	Charlotte Mayo Bryant	706.278.8344
Director	Jeanette Banks	770.948.8444 onjbanks@comcast.net

The article submittal due date for the November 2005 Lodestar is October 25th.

Copyright© 2005 by the Southeast Federation of Mineralogical Societies, Inc. Except for items that are specifically copyrighted by their authors, other societies may use material published in **Lodestar** provided that proper credit is given and the sense or meaning of the material is not changed. Editor: Carolyn L. Daniels.



EDITOR'S RAMBLINGS

I would again like to encourage everyone that has internet access to elect to receive the electronic *Lodestar*. It has come to my attention that the last two issues of *Lodestar* have been very late in arriving at many of their destinations. I'm not sure why this is so, since I have mailed them at the same time of month as I usually do. If you elect to receive the *Lodestar* by email, you will have access to it no later than the 10th or 11th of the month. The only way I can insure that the *Lodestar* is delivered by the middle of the month is to make the deadline much earlier in the month. I don't think this would work since I'm having difficulty getting article in time for the current deadline.

Let's continue to keep those affected by the recent natural disasters (Hurricanes Katrina and Rita), the flooding in South America, and the earthquake in Pakistan, in our thoughts and prayers.

Sincerely,
Carolyn L. Daniels, *Lodestar* Editor

YOUTH RESOURCES

TAKE YOUR KIDS SURFING ON THE WEB

The AFMS Junior Activities Chair, Jim Brace-Thompson, is encouraging our youth to use the internet to learn more about our hobby. Of course, the internet is not limited to youth use alone. It is time to capitalize on the use of web sites to learn more about fossils, minerals, lapidary arts and even about museums. For details on these websites, read Jim's article in the June-July-August 2005 issue of the *A.F.M.S. Newsletter*.

The list of websites includes:

- www.isgs.uiuc.edu/dinos/ and www.paleoportal.org for fossils,
- www.usgs.gov, www.mii.org, www.womeninmining.org, and www.theimage.com for minerals and earth resources,
- www.rockhounds.com, Socrates.berkeley.edu/~eps2/, www.tradeship.com/gems/ for lapidary arts,



- www.lib.washington.edu/sla/natmus.htm and Paleo.cc/kpaleo/museums.htm for information about museums, and
- www.amnh.org/education/resources/ for lessons for youth from the American Museum of Natural History.

You can encourage the youth of your club to surf the Web and share what they learn about their hobby at the next meeting.

Leona and Hugh Sheffield,
SFMS Youth Resources Chairmen

CLUB ROLE IN SCHOLARSHIP AWARDS

The Directors of the Mayo Educational Foundation, Inc. (MEFI) award scholarship grants after evaluating materials submitted by student applicants. These include grade transcripts, current and anticipated income and expense details, and a letter outlining their goals. They also must have a letter of support from the college/university department head, **and a letter of support from a Southeast Federation of Mineralogical Society, Inc. (SFMS) member club.** Each of these items is rated from one to five points. Naturally, the more positive and enthusiastic the recommendation is, the more points the student will receive.

The club letter does **not** have to be written by the club president. It **should** be written by a club member who knows the applicant, someone who can offer personal endorsement or support, who can perhaps add a bit of background about the individual. MEFI applicants do **not** have to be club members. However, if they are, or if they have participated in a club event such as a show or program presentation, it doesn't hurt to mention this. And if no one in the club knows the student, it's time to find out why the club is being asked to support that individual!

Diane Dare, MEFI President

SHOW CANCELLATION

It is with regret that I inform the SFMS membership that the Mississippi Gulf Coast Gem and Mineral Society's annual *Magnolia State Gem, Mineral, and Jewelry Show*, scheduled for November 11-13, 2005, has been cancelled due to damages caused by Hurricane Katrina.

The civic center building where we hold our show actually had very little damage, but many other county facilities received severe damage and their operations have been relocated to the civic center. We were informed that the civic center building will not be returned to normal use until after the first of the year.

John Wright, Show Chairman
Mississippi Gulf Coast Gem and Mineral Society
(from an email dated 9/20/05)

**MAYO EDUCATIONAL FOUNDATION, INC.
MEMORIALS & HONORS DONATIONS**

A memorial or honor donation to MEFI can pay tribute to or recognize someone special to you or your club. Your tax-deductible contribution also offers help for deserving college students to further their education in the earth sciences. An appropriate notification will be sent to the person or family you designate, advising them of your thoughtful gift.

MEMORIALS: Your Gift Memorial provides a thoughtful and dignified means of perpetuating the memory of a friend or loved one.

HONORS: You can contribute in honor of a loved one, a friend, business associate, club member or club. It is an excellent way to acknowledge anniversaries, birthdays, convalescence, holidays or other events.

Donor: _____ Amount: _____

Address: _____

City: _____ State: _____ Zip: _____ Phone: _____

How do you wish
the card signed? _____

Check one: In Memory of: _____ In Honor of: _____

Occasion: (*birthday, anniversary, speedy recovery, etc.*) _____

Send MEFI notification to:

Name: _____

Address: _____

City: _____ State: _____ Zip: _____ Phone: _____

Make check payable to : **MAYO EDUCATIONAL FOUNDATION, INC.**
Mail to Frank Decaminada, MEFI Treasurer, 795 Nile Drive, Alpharetta, GA 30022

BE SAFE – BE WELL**A message from your Safety Committee
“It’s a Jungle Out There”**

The members of our clubs have many varied interests. Some are interested in collecting specimens. Others collect stones (gems, minerals, etc.) to use when they produce jewelry or they hunt fossils. One of the things that we all seem to have in common is that we enjoy field trips.

As we enter the fall and early winter, the weather really entices us to get out and do fun things. As we go out in the wilds, we need to recognize that this can be a hazardous time of the year. As a matter of fact we may encounter some hazards that are not always around us or, may be not be quite as severe as they are right now.

An article in the *Atlanta Journal* recently pointed out that poisonous snakes should be more of a concern now than in mid-summer. Rattlesnakes and copperheads bear their offspring at this time of the year and, like all new parents, are very protective. That means they will bite you. I know that when I am out looking for whatever, I may not be really attentive to what is happening around me and may do something extremely stupid like reaching down in a hole or lifting up a rock or log to see what may be under there. Mr. “No shoulders” may be resting there out of the sun or rain and will not appreciate your visit. This would be particularly embarrassing to me since I have been bitten by a rattlesnake before because I was not paying attention.



Another hazard that can be extremely dangerous for those with a sensitivity to such is insect stings. Yellow jackets, wasps, bees and hornets are making their final preparations for winter. A nice warm place to live such as a nest or a hole in the ground becomes a priority item. Based on some of my encounters, the yellow jackets become very combative if you venture close to their nest, which is usually a rather unobtrusive hole in the ground. Hornet’s nests are sometimes collected as souvenirs on the assumption that they are no longer inhabited. Not necessarily so!



Those plants that have the ability to cause skin problems such as poison oak, poison ivy and some of the sumac varieties do not become safe when the leaves fall off. As a matter of fact the sap in the roots can be extremely potent and create a real problem for us, particularly if you get it in your eyes. Also, if for any reason you burn some of these plants, the smoke can transmit the irritant to eyes, nose and skin which is the worst way to become infected.

The last hazard I want to spotlight is fire. In most parts of the country, the woods are very dry and it is so easy to start a fire. Not only will you be probably violating the law, you can place yourself and your companions in real danger. If a wild fire can trap and kill professional firefighters, aren’t we in greater danger?



The solution to all of the hazards mentioned as well as many others is simply to keep our wits about us. Be alert to our surroundings and don’t do stupid or very unwise things. If we take care of ourselves, we can continue to do the things we enjoy and introduce the next generations to our great hobby.

Don Monroe, SFMS Safety Chairman

A FIELD TRIP TO WOODBURY

On September 10, 2005, the Middle Tennessee Gem & Mineral Society hosted a DMC field trip to Woodbury, Tennessee, to collect quartz geodes. Many rockhounds arrived at the meeting place early and ate breakfast on the square in Woodbury. We then gathered to sign in and pay our \$5.00 and get directions to the site. There were an estimated 40 attendees, approximately 15 of which were Georgia Mineral Society members.

We drove a short distance to the property owner’s land and parked. About 25 folks climbed on the back of a utility truck with the remainder taking their own vehicles, and up the hills we went. The property owner had recently cleared a large hilltop, and we were free to wander hither and yon searching for geodes. There were a good number of geodes lying about, and a few were partially buried. Everyone found several bucketsful and were very happy.

Some of us returned to town to eat lunch at Joe’s, a locally famous restaurant. After lunch we were treated to a visit to the brand-new Gem, Mineral, and Fossil Museum in Murfreesboro. The museum is located on the campus of the Middle Tennessee State University. We were the first guests of the museum, with the exception of a couple of deans who had come by. The museum was very impressive, and we enjoyed ourselves immensely. We highly recommend readers visit the museum.

Our thanks to host Lewis F. Elrod, CFE and museum curator Albert E. Ogden, Ph.D. for allowing us to tour the museum and see the beautiful collections held within. Also, thanks also for the lively discussion we had. All in all it was a terrific field trip and excursion.

*Lizabeth and Mickey McClain
Georgia Mineral Society members
(from Jim Flora, SFMS Webmaster)*

PASSING OF A GENERATION

Greetings friends and colleagues,

Sad news of the passing of a giant: Cornelius Hurlbut. Any of us who took mineralogy in the last century probably used the “Green Book” - Dana’s Manual of Mineralogy frequently revised and updated (now in its 22nd edition) by Hurlbut and Klein. It’s the first book I grab to begin to search for answers to mineralogy questions. Cornelius Hurlbut was a link to those glory days of mineralogy at Harvard where he worked with other giants: Palache, Berman, and Frondel, who revised Dana’s System of Mineralogy, as Carl points out below. [Question: Why was Dana’s (a Yale professor) work continued by Harvard researchers?]

*Best regards,
Julian C. Gray
Georgia Mineral Society Member*

From: Carl Francis (Harvard University)
Subject: Passing of a generation
Date: Tue, 6 Sep 2005 17:05:07 +0000

Dear All,

Professor emeritus Cornelius S. Hurlbut, Jr. passed away peacefully on September 1, 2005. Connie was in his 99th year. His work on pegmatite minerals and borates comes immediately to mind. However, he began as a petrologist.

October 2005

The Southeast Federation of Mineralogical Societies, Inc.

He was an E.S. Larsen student and did his dissertation on the Bonsal tonalite in southern California. He is probably best known as author of Dana's *Manual of Mineralogy*. He took over from William E. Ford, publishing the 15th edition in 1941. He published the 18th edition in 1971 and co-authored with Kase Klein the 19th, 20th and 21st editions.

In his retirement he turned to gemology, publishing papers, teaching it at BU, co-authoring a textbook with George Switzer, and designing a cubic zirconia refractometer. He was, for me, the personification of a gentleman.

Sincerely,
Carl Francis
(from an email forwarded to the *Lodestar* editor)

member Regional Federation...." the SFMS By-Laws provides for the SFMS annual meeting to be held in two parts - Phase 1 and Phase 2.

Phase 1 will be held in Nashville, August 19, 2006. Any regular business will be conducted and annual competitive exhibits will be judged at that time.

SFMS Annual Meeting Phase 2 will be December 1-3, 2006 in Montgomery, AL. All business, including election of officers, will be conducted at that time. The Annual Banquet and Editor's Breakfast will also be held.

Please direct any questions concerning this report to me.

Ann Monroe, 1st VP SFMS

LETTER FROM THE SFMS SECRETARY TO MEMBERS REGISTERED FOR THE SEPTEMBER EXECUTIVE BOARD MEETING (Dated September 8, 2005)

Dear Friends:

All of us are saddened and disappointed at the cancellation of the meeting scheduled for Hendersonville, NC, on September 3. However, we were all aware of the dangers of travel for some of our members and the gasoline shortage caused by Hurricane Katrina. Many of our members living in the four states most affected by the hurricane had damage and major losses to their homes and we are very much in prayer for their recovery. Please let us know where you are, the amount of damage done to you, whether you are able to be back in your home at this time, and what we (the individual members of the federation) can do for you. You may wish to send a note to Edna Morris, Social Concerns Chairman, for reporting in the *Lodestar*.

Hopefully, things will be settled and we will get to see each of you at the annual meeting in Melbourne, Florida on November 12-14.

At the request of our President, Eileen Price, I am sending you a copy of the packet of reports and information prepared for distribution at the Hendersonville meeting. In this way, we can keep in touch with each other and with the business of the federation.

Again, let me express my sadness and concern for those of you who were adversely affected by the recent weather. We care about you.

Sincerely,
Betty M. James, SFMS Secretary
(Reports of SFMS officers and committee chairmen follow. - editor)

1ST VICE PRESIDENT'S REPORT

At the time of this report I have just returned from the AFMS meeting in St. Louis. My report on the meeting will be given at the SFMS annual meeting in Melbourne.

As you all know, the AFMS annual meeting for 2006 will be hosted by the Southeast Federation in Nashville, TN on August 14-20, 2006.

Article V of the AFMS By-Laws states, "The annual meeting shall be held in conjunction with an annual convention of a

SECRETARY'S REPORT (August 30, 2005)

Of the registration forms I sent out, I received the following responses:

- Club presidents: 1 delegate, 6 alternates, 2 presidents and one not indicated will attend. Five will not. Total responses: 15 from a total of 81 clubs.
- Officers: 5 yes, 2 no of 11 officers.
- State Directors: 3 yes, 2 no of 9.
- Committee Chairmen: 18 yes, 4 no, 1 possible of 21. Two of these committees had more than one member responding.

From a total of 122 possible responses, I received 50.

Respectfully submitted,
Betty James, SFMS Secretary

INTERNET WEBSITE UPDATE: SUMMER 2005

There were many additions made to the SFMS Internet Web presence this past federation quarter. We have had several updates to the SFMS William Holland Workshop and SFMS Wildacres Workshop on-line information pages. We continue to update and to the SFMS clubs' show information pages as changes are submitted.

We continue to add to the electronic *Lodestar* page where all SFMS members can now read and download the current copy of our federation newsletter. We also continue to add to the historical data base of past *Lodestar* newsletters in PDF format starting with the January 2004 issue.

We have used the SFMS website to inform our members and the general public of the closure of several of our long-standing collecting locations and the details of special "open" field trips and rock swaps.

Jim Flora, SFMS Webmaster

AFMS PROGRAM COMPETITION

Now is the time to encourage your club members to enter the 2006 AFMS Program Competition. Information for entering is available on the AFMS website. It is time we saw our names on the winners list.

Freda Hull
Slide and Video Programs Chairman

EDUCATION CHAIRMAN'S REPORT

This has been an unusual year for SFMS Workshops. The attendance at the April session was somewhat smaller than usual. Another group had been assigned a number of bedrooms in the South Lodge and was given the upstairs pottery meeting room for their meetings. Upstairs pottery is the largest meeting room and has generally been assigned to PMC, which then had to be canceled. This is an example of what occurs if the SFMS does not fill a workshop session and another group is scheduled to use the bedrooms we do not fill. Once we have lost the space it is very difficult to recover it. The September Workshop session at Wildacres is another example where we have lost bedrooms and are now stuck with permanently reduced attendance.

Attendance for the June SFMS session at William Holland was also seriously reduced although non-Federation sessions just prior and after the SFMS session had waiting lists. The October session at William Holland currently has a low total enrollment. We are unable to account for this although there are several possible reasons. First, the 2005 SFMS registration fee is \$20 higher than the fee for the non-Federation sessions at William Holland. I am disappointed if this is the main reason. It is likely that the William Holland School will raise their registration fee significantly in 2006. Poor attendance at the SFMS sessions at William Holland places a significant financial hardship on the Retreat since our payments for Room and Board do not come anywhere near the income the Retreat receives during their own sessions. It could affect our contract with the Retreat, which is renewed annually.

I have been told that another factor affecting Workshop attendance is the after effects of the hurricanes in 2004. Many of our South Florida SFMS members were hit hard financially making repairs and some still are waiting for roof repairs a year later. In addition to hurricane-related expenses, gasoline prices make a trip from South Florida a significant cost of attendance. *In some cases the travel expenses exceed the workshop registration fee!* We hope that 2006 will be better.

The Education Chairman is collecting information on travel expenses for instructors that have volunteered to teach at SFMS Workshops during 2005. We will submit a request at the Annual Board Meeting for a budget increase to "help" defray the excessive gasoline costs that some of the instructors must pay when traveling from Central Florida to Wildacres or William Holland. Because round trip travel expenses can be in the \$200-300 range, a partial reimbursement of gasoline costs will help us keep some of our important instructors. The travel costs will be documented in the budget request. The excess funds in the SFMS treasury should easily support this expense.

Fred Sias, SFMS Education Chairman

SFMS LIABILITY INSURANCE REPORT (April 1, 2005 - March 31, 2006)

Sixty one (61) SFMS clubs have enrolled in the program for this coverage period. These clubs report memberships of 6,328 adults and juniors. Certificates of insurance have been issued for 30 special events (e.g., shows, etc.). We have maintained a good working relationship with our agency in Atlanta and hope our new Liason will find it helpful. There are guidelines now available for any person that is appointed to

this important job and has no experience in the field. The SFMS website has been updated to include information that answers many questions.

*Respectfully submitted,
Ken Anderson, Acting SFMS Insurance Liason*

SFMS SAFETY COMMITTEE REPORT

Since assuming the position of Chairman of the Safety Committee for the Southeast Federation, I have received a lot of good input from various members with suggestions for articles for *Lodestar*.

I have sent one article and have another ready to publish. It is my observation that our federation members are very concerned about safety and are quite interested in information relating to our hobby and its inherent hazards.

Don Monroe, SFMS Safety Committee Chairman

DMC FIELD TRIP PROGRAM REPORT

The DMC field trip program conducted four field trips this past SFMS session. On Friday, Saturday, and Sunday - May 13-15, 2005, all SFMS gem and mineral clubs were invited to a three day rock swap and dig at Graves Mountain - Georgia's premiere mineral location!

The June 18, 2005 DMC trip was sponsored by the Tennessee valley Rock and Mineral Club (Chattanooga, TN). This was a DMC hosted trip to Chunky Gal Mountain, North Carolina for zoisite with ruby and crystal clear garnets.

In July, the DMC field trip was to the Rose Creek Mine. The Gem and Mineral Society of Franklin, NC hosted this trip on Saturday, July 23, 2005. Collectors were able to purchase specially priced buckets of native dirt to flume wash. Rubies, sapphires, garnets, small quartz, feldspar and possibly emerald crystals were to be found.

The August DMS field trip was held on August 20, 2005. This was a trip hosted by the Georgia Mineral Society (Atlanta, GA) to Cartersville, GA to collect the famous cave onyx at Ladd's Mountain. In the process of mining this mountain for limestone, caves were exposed that contained beautifully banded calcite ranging in colors of orange-red to creamy white and yellow. This type of calcite formation is called "cave onyx" or "flowstone". Collectors were also able to collect black flint nodules, dendrites, calcite crystals (botryoidal and stalactitic), aragonite, and dolomite. In the afternoon, participants enjoyed a visit to the Weinman Mineral museum.

The SFMS Field Trip Committee has received ten DMC membership renewals through the end of July.

*Respectfully submitted,
Jim Flora, SFMS Field Trip Committee Chairman*

SFMS PROGRAM LIBRARY REPORT

The programs from the AFMS competition have been cataloged and an updated list will be sent for posting on the SFMS website.

I hope everyone was able to get the programs they requested in a timely manner while I was away this summer. Thanks to my daughter, programs were sent when requested.

Freda Hull

October 2005

The Southeast Federation of Mineralogical Societies, Inc.

STAMP COMMITTEE REPORT



The stamp sales have picked up and prices are again good, the bad news is the donations are down even more than last year. I am not averaging two sales per month this year. We have not had anything to put on E-bay in three weeks as of August

13, 2005.

It has been apparent for sometime now that most clubs in the Southeast Federation have lost interest in this program. Two or three years ago we were getting 20 to 30 pounds of stamps per month. We have not received that many in the past eight months, keep in mind, less than one stamp in 10 donated to the program have any resale value at all. It's not hard to see we need a lot of stamps to keep the program going.

Every donation we receive, there are fewer and fewer usable stamps included. I suspect there are many people holding back stamps hoping to later sell them themselves, or build a collection of their own. Then there are a lot of companies now who are selling the stamps from their mailrooms, or some employee is doing it. There were times when we received a large donation of three or four pounds of stamps, I would spend four or five hours going through it, only to find all commemorative, un-cancelled, and plate number coils have been removed. I don't imply that any of our people are doing this. It's most likely being done before they are donated to us or some collector bought a bag of stamps on E-bay or some other source, went through it, picked out all usable stamps, then donated it to us, thinking they have done us a favor. Nothing could be farther from the truth, it's a waste of your money mailing it to me, and my time going through it.

Club chairpersons should check all stamps and throw away all heavily cancelled, soiled, or damaged stamps before they send them to me.

Time permitting, I will have more on the subject at the meeting.

Jim Robinson, SFMS Stamp Committee Chairman

AFMS UNIFORM RULES COMMITTEE

The Uniform Rules Committee of the AFMS met August 16, 2005 in St. Louis, Missouri, with Bill Cook, chairman, presiding. SFMS was represented by Jim Robinson and Ann Monroe.

Anne Cook, Secretary, reminded regional chairmen to send timely reports of their competitive entries and scores of ALL entries. Anne keeps records of regional eligibility for AFMS entries.

Bill presented the need for an updated mineral list with corrections in spelling, names, etc. Ron Carmen volunteered and was accepted for the job.

Three rule changes were presented:

1. Reduce number of specimens required for Junior and Novice cases - presented by Jim Hurlbut. Did not pass.
2. More stringent requirements and strict scoring rules for showmanship by Barbara Jacobson. Did not pass.
3. Need for committee to formulate rules for Beading Division by Betty James. Passed. Jim Hurlbut to head the committee.

Respectfully submitted, Betty James

WILDACRES DIRECTORS' REPORT

Hello to all,

We had an excellent April Session. About one fourth of those present were there for the first time. A new class was introduced: *Space Science and Local Geology*. Dr. Mike Reynolds presented a fine class and with the help of student comments, it will be refined further for the April 2006 Session.

For the August 2005 Session we will have somewhere between 95 and 100 people in attendance at Wildacres. The exact number will be difficult since we always have last minute changes. This is close to being at capacity, which we love to see.

For the September Session we are sharing Wildacres with another small group and Mike House has given us some more rooms which will let us have about 90 spaces. Only a few classes have openings and we hope they will fill before the session begins.

We are unable to make this meeting (*the September 2005 meeting - editor*) and regret not seeing our friends again. We will see you at Wildacres or at the Annual Meeting.

*Barbara and David Tuttle,
Wildacres 2005-2006 Directors*

WILDACRES REGISTRARS' REPORT

April attendance was low. We had 54 people attending. Thirty-nine were paying students, eight were instructors, and the rest were instructors, spouses, directors, registrars, and the education chairman. The Masonry Heaters were happy to use all the space we did not claim. Our auction brought in \$1,464, which was great, considering our low numbers.

In August, we are scheduled to have 94 people attending. Seventy-five are paying students, 12 are instructors, and the rest are spouses and support personnel. Many late cancellations occurred just before this session.

In September, we are scheduled to have 87 people attending. Sixty-nine are paying students, 10 are instructors, and the rest are spouses and support personnel. We have had to contact Wildacres twice to request more rooms to meet the demand for this session.

Bill and Kerri Wetzel, SFMS Wildacres Registrars

SFMS/AFMS ENDOWMENT FUND 2005

The AFMS Endowment Fund is a worthy cause. Each year the funds are used to provide the seven regional Federations with valuable educational tools such as slide and video programs. These programs are supplied at no cost to the Federations and add much to the SFMS Educational Library.

This year our Federation sales were \$255.00. These funds were sent to the AFMS Endowment Fund Chairman, Joy Bourne in mid-July.

The drawings were held in St. Louis, Missouri during the AFMS/NCFM Annual Meeting in August 2005. As this meeting will be held after I submit this written report, I will hope to add information on award winners verbally during this meeting.

Ken Anderson, SFMS Chairman AFMS Endowment Fund

WAYS AND MEANS COMMITTEE REPORT (September 3, 2005)

Enclosed is a preliminary strawman budget for the SFMS for Fiscal Year 2006. The data shown by the enclosure (page 10) is based on information received from our Treasurer Ken Anderson and Assistant Treasurer David Katt and from comments received at our Executive Board meeting in Memphis, Tennessee in April of this year. Please review the dollar allocations and provide me with any changes by October 3, 2005 that you feel should be considered before presentation at the annual meeting in Melbourne, Florida. To assist you with any desired change and enclosure (not included since date has expired) to this report is provided for mail back to the undersigned.

At the conclusion of the 1999 Annual Meeting, the members voted to cap the total assets by approving deficit budgets in future years. For Fiscal year 2005, it is planned to continue this policy by having a deficit budget of \$4,400.

Income for Fiscal Year 2006 should be \$17,000. This sum includes SFMS membership dues of \$7,600 and expected Workshop auction income of \$17,500. These incomes along with \$1,800 from investment interest earnings and \$100 from supplies constitute our funding sources. Note that the \$100 shown for supplies sales is offset by the cost of purchasing these supplies. Exclusion of \$100 leaves a working income of \$16,900.

Expenses are divided into three categories:

1. Officers and staff committee expenses of \$2,300. (Staff committees support the officers. - Ways and Means is an example of such a committee.)
2. Committee expenses of \$15,100. (Program Committees are those which directly impacts our members.
3. Miscellaneous expenses of \$7,500. (Primarily American Federation of Mineralogical Societies costs.)

Program committee expenses are the largest funded category. The largest part of every year is the cost for publication and mail-out of *Lodestar*. Other expenditures for bulletin contest, slide show/videos are in line with prior years and with expectations for 2006. The high dollar value shown for publications is for printing and mail-out of the SFMS Directory.

It should be noted that the 2006 Fiscal Budget continues the financial policy cap of \$60,000 that was put in place at the 1999 SFMS Annual Meeting. As you recall, three new line items were added for Fiscal year 2001. For Fiscal Year 2006, these line items are funded as follows:

1. \$5,000 to the Education Committee for the SFMS William Holland and Wildacres Workshops. Included within these funds are \$1,000 for Youth Scholarships. The balance of the funds are to be spent by the Education Committee as best fits the needs of the workshops. Disbursements are to be from the Treasurer. Note that the \$5000 budgeted

is in line with Fiscal Year 2005.

2. \$900 to the three societies/clubs who hosted the Executive Board and the Annual Meetings of the SFMS. Funds are to be used to cover club expenses and to assist the show judges with their expenses. The \$900 dollars is to be distributed: (1) \$550 for the annual meeting and (2) \$175 for each Executive Meeting. Note that the additional \$150 that has been added for the Annual Meeting is to cover anticipated increased costs for SFMS case ribbons, trophies, and related judging supplies. Payments are to be made by the SFMS Treasurer only after actual expense invoices were submitted by the hosting clubs.
3. \$250 for Youth Resources to enable assistance to the Societies/Clubs to improve their Juniors Program.

Under Miscellaneous Expenses are the \$0.50 dues SFMS pays to the AFMS. Note that travel expenses to the AFMS Annual Meeting is zero since the SFMS is the host for 2006. As in Fiscal Year 2005, a donation of \$500 to the Mayo Educational Foundation, Inc. is included.

Are you in favor of continuing deficit budgets or do you wish to make a change? Should you desire no changes, I still would appreciate you letting me know by mail or email of your acceptance of the 2006 SFMS budget.

*Respectfully submitted,
Fank Decaminada, Chairman,
SFMS Ways and Means Committee
Ken Anderson, Treasurer
David Katt, Assistant Treasurer*

SFMS TREASURER'S REPORT

Interest rates have moved slowly upwards and are expected to continue this minimal improvement. Current income for this line item exceeds projects by \$362.00 (48%).

Insurance has moved to a positive number, however this will be subject to an annual audit and will not remain constant.

I would like to ask all those that have budgets for expenses to be as prompt as possible in submitting reimbursement requests.

As of August 8, 2005, our accounts are:

CD #1: \$40,000.00; 13 months @ 3.1% Matures 8/06
CD#2: \$20,679.50: 6 months @2.72% Matures 1/06
Checking: \$14,709.73
Total: \$75,389.23
* Less stamp funds: \$1,804.08
Available funds: \$73,585.15

* = Stamp Account Funds are co-mingled with Federation operating funds, but are available for stamp scholarships only.

*Respectfully submitted,
Ken Anderson Treasurer*

October 2005

The Southeast Federation of Mineralogical Societies, Inc.

SOUTHEAST FEDERATION OF MINERALOGICAL SOCIETIES, INC.

Proposed Operating Budget for 2006

INCOME	2003 ACTUAL	2004 ACTUAL	2005 BUDGET	2006 BUDGET
Dues	\$ 7,761	\$ 7,778	\$ 7,600	\$ 7,600
Interest	\$ 2,234	\$ 693	\$ 750	\$ 1,800
Wildacres	\$ 5,526	\$ 3,973	\$ 4,850	\$ 4,500
Wm. Holland	\$ 2,746	\$ 3,784	\$ 3,250	\$ 3,000
Supplies	\$ 169	\$ 0	\$ 100	\$ 100
TOTAL INCOME	\$18,436	\$16,228	\$16,550	\$17,000
OFFICERS' EXPENSES	2003 ACTUAL	2004 ACTUAL	2005 BUDGET	2006 BUDGET
President	\$ 3	\$ 0	\$ 200	\$ 0
1st V.P.	\$ 0	\$ 0	\$ 100	\$ 0
2nd V.P.	\$ 0	\$ 0	\$ 100	\$ 0
Secretary	\$ 939	\$ 484	\$ 1,300	\$ 750
Membership Secretary	\$ 276	\$ 187	\$ 350	\$ 300
Treasurer	\$ 145	\$ 137	\$ 150	\$ 150
Other Officers	\$ 0	\$ 0	\$ 500	\$ 100
OFFICERS' SUBTOTAL	\$1,363	\$ 808		
COMMITTEE EXPENSES	2003 ACTUAL	2004 ACTUAL	2005 BUDGET	2006 BUDGET
Bulletin Contest	\$ 652	\$ 490	\$ 700	\$ 600
Editor (<i>Lodestar</i>)	\$ 5,913	\$ 6,223	\$ 6,850	\$ 6,250
Computer System	(\$ 50)	\$ 209	\$ 350	\$ 0
Publications	\$ 1,462	\$ 1,355	\$ 1,700	\$ 1,600
Insurance (net)	(\$ 1,170)	(\$ 1,671)	\$ 0	\$ 0
Supplies	\$ 4	\$ 0	\$ 400	\$ 100
Slide Programs	\$ 374	\$ 212	\$ 400	\$ 300
Education	\$ 4,437	\$ 4,998	\$ 5,550	\$ 5,000
Federation Meetings	\$ 497	\$ 609	\$ 900	\$ 900
Youth Resources	\$ 99	\$ 126	\$ 350	\$ 250
Social Concerns		\$ 0	\$ 150	\$ 150
COMMITTEE SUBTOTAL	\$12,218	\$12,551	\$17,300	\$15,100
MISC. EXPENSES	2003 ACTUAL	2004 ACTUAL	2005 BUDGET	2006 BUDGET
Dues Am. Federation	\$ 3,759 (a)	\$ 3,879 (a)	\$ 3,800 (a)	\$ 3,800 (a)
Officer Travel, AFMS	\$ 1,180	\$ 1,214	\$ 1,800	\$ 0
Awards	\$ 709	\$ 431	\$ 700	\$ 500
Mayo E. Foundation	\$ 0	\$ 0	\$ 500	\$ 500
Miscellaneous	\$ 195	\$ 0	\$ 250	\$ 200
MISC. SUBTOTAL	\$ 5,843	\$ 5224	\$ 7,050	\$ 5,000
OVERALL SUMMARY	2003 ACTUAL	2004 ACTUAL	2005 BUDGET	2006 BUDGET
Total Income	\$18,436	\$16,228	\$16,550	\$17,000
Total Expenses	\$19,424	\$18,883	\$27,050	\$21,400
DIFFERENCE	(\$ 988)	(\$ 2,655)	(\$10,500)	(\$4,400)

The Southeast Federation of Mineralogical Societies, Inc.

October 2005

SOUTHEAST FEDERATION OF MINERALOGICAL SOCIETIES, INC.

AUGUST 8, 2005 - TREASURER'S REPORT

	ACTUAL 8/8/05	ANNUAL BUDGET
GEN'L FUND		
CASH BALANCE 1/1/05	\$72,430.76	\$72,430.76
INCOME:		
DUES	\$ 7,630.00	\$ 7,600.00
INTEREST	\$ 1,112.96	\$ 750.00
WILDACRES		\$ 4,850.00
WM. HOLLAND		\$ 3,205.00
SUPPLIES	\$ 63.50	\$ 100.00
MISCELLANEOUS		
TOTAL	\$ 8,806.46	\$ 16,550.00
EXPENSES:		
PRESIDENT		\$ 200.00
FIRST V.P.		\$ 100.00
SECOND V.P.		\$ 100.00
SECRETARY	\$ 164.75	\$ 1,300.00
MEMBERSHIP		
SECRETARY	\$ 268.04	\$ 350.00
TREASURER	\$ 159.34	\$ 150.00
NEWSLETTER (NET)	\$ 2,833.09	\$ 6,850.00
COMPUTER		
SYSTEMS		\$ 350.00
SUPPLIES	\$ 71.96	\$ 400.00
SLIDE PROGRAM	\$ 85.76	\$ 400.00
BULLETIN EDITOR'S		
CONTEST	\$ 55.24	\$ 700.00
PUBLICATIONS	\$ 1,161.32	\$ 1,700.00
INSURANCE (NET)	(\$ 1,742.72)	----
OTHER OFFICERS		\$ 500.00
AFMS TRAVEL		\$ 1,800.00
AWARDS		\$ 700.00
SFMS MEETING		
HOSTS	\$ 158.87	\$ 900.00
SFMS JUNIOR		
ACTIVITIES	\$ 112.58	\$ 350.00
WORKSHOP		
IMPROVEMENTS		
W/S INSTRUCTOR		\$ 5,500.00
EXPENSE		
W/S/ SLIDE & OTHER		
PROGRAMS	\$ 438.84	
W/S YOUTH		
SOCIAL CONCERNS		\$ 150.00
MISCELLANEOUS &		
MAYO DONATION		\$ 750.00
TOTAL	\$ 7,652.07	\$27,050.00
CASH BALANCE 8/8/05	\$73,585.05	\$61,910.76
STAMP PROGRAM		
8/8/05	\$ 1,804.08	\$ 1,710.00
WORKSHOP		
ACCOUNTS	WM. HOLLAND	WILDACRES
CASH BALANCE 8/8/05	\$ 1,900.00	\$ 1,710.00
LODESTAR EDITOR		\$1,299.87

MAYO EDUCATIONAL FOUNDATION, INC.
REPORT

The MEFI Directors carefully, thoughtfully, and promptly (thank you!) reviewed the applications for the 2005-2006 scholarship grants. The suggested allocations were tallied

and a total of \$7,200 was distributed among six (6) students, one of whom is a repeat awardee. Checks were sent to their respective schools on June 21, and we have even received two "thank-you" letters.

A detailed report on the recipients and amounts has been provided to *Lodestar* editor Carolyn Daniels for inclusion in a future issue (*printed in the September issue - editor*). We do want all SFMS clubs and members to know how the MEFI money is being spent. I am sure Frank Decaminada will also have a Treasurer's report for this meeting.

Jeanette Banks has been assisting Olin with a thorough review and update of the MEFI Constitution and By-Laws. This time-consuming job has now been completed. Olin coordinated them with the SFMS Constitution and By-Laws and submitted the results to the SFMS By-Laws revision Chairman for consideration. We hope to complete this project at the Annual Meeting.

Please support the Mayo Educational Foundation, Inc. **DARE** I say that your Donations Assist, Reward, and Encourage future earth scientists? Thank you!

Prepared by Diane Dare, MEFI President

THE MAYO EDUCATIONAL FOUNDATION, INC.
FISCAL YEAR 2005-2ND QUARTER
TREASURER'S REPORT

For the past two quarters of this year, contributions to the Mayo Educational Foundation, Inc (MEFI) were \$1,818 and interest income was \$4,032.99 as shown by the attachment (see page 12). It is forecasted for Fiscal Year 2005 that interest income will be at least \$7,800 due to higher Certificate of Deposit interest rates. This amount will enable the MEFI to increase scholarship values in Fiscal Year 2006.

Notice that the attachment shows the maturity date for all Certificates of Deposit. Many of the C.D.s will mature between November 2005 and February 2006. The dollar value will be over \$155,000 which is over 60% of the MEFI assets. With Certificate of Deposit rates over 4.1%, what a great time for this to occur!

Remember that the Mayo Educational Foundation, Inc. only gives out scholarships based on income and that all contributions are retained in C.D.s. Looking forward to more SFMS Clubs/Societies contributing to the MEFI this year.

Frank Decaminada, MEFI Treasurer

October 2005

The Southeast Federation of Mineralogical Societies, Inc.

**MAYO EDUCATIONAL FOUNDATION, INC.
TREASURER'S REPORT
2005 FISCAL YEAR - 2ND QUARTER**

	Through 12/31/04	1/1/05 Through 6/30/05	TOTAL
CASH RECEIVED			
CONTRIBUTIONS	\$220,494.32	\$ 1,818.00	\$222,312.32
INTEREST	\$154,289.06	\$ 4,032.99	\$158,322.05
TOTAL	\$374,783.38	\$ 5,850.99	\$380,634.37
CASH DISBURSED			
EXPENSES	\$ 7,644.01	\$ 0.00	\$ 7,644.01
SCHOLARSHIPS	\$119,960.00	\$ 3,750.00	\$123,710.00
TOTAL	\$127,604.01	\$ 3,750.00	\$131,351.01
CASH BALANCE CROWN SAVINGS ASSOC.	\$247,179.37	\$ 2,100.99	\$249,280.36
CD 3.1% MATURE 2-06		*****\$365.00	\$ 82,398.29
CD 3.1% MATURE 1-06		*****\$565.00	\$ 39,806.12
NATIONAL BANK OF COM.			
BANK ACCOUNT CD 3.0% MATURE 11-05		*****\$383.00	\$ 3,760.42
CD 3.0% MATURE 1-06		*****\$496.00	\$ 26,329.61
CD 3.0% MATURE 6-06		*****424.00	\$ 18,634.19
NORTH ATLANTA NATIONAL BANK			
CD 3.75% MATURE 5-07		*****\$ 44.00	\$ 22,663.89
CD 2.38% MATURE 6-07		*****\$ 70.00	\$ 3,288.40
TOTAL			\$249,280.36

**YOUTH RESOURCES
QUARTERLY REPORT
APRIL 2005 - SEPTEMBER 3, 2005**

The Youth Resources Committee has had a quiet time since our last report (April 22nd). Our *Lodestar* articles continue to appear in almost every issue. The Criteria from the youth seeking the JOY award is due in early November. We will announce a winner at the SFMS Annual Banquet in Melbourne, Florida on November 11th. The "Junior of the Year" will receive a mineral specimen this year.

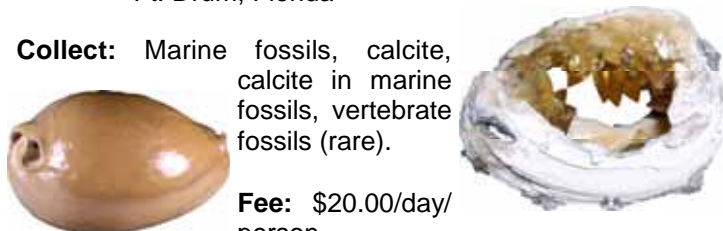
We do hope that our youth workshop scholarship winners have enjoyed their SFMS workshops and will be writing their articles soon to appear in the *Lodestar*. We thank our Education Chairperson and the workshop registrars and directors that coordinate the details in order for these youth scholarship winners to attend the workshop of their choice.

We will continue to encourage youth participation in the local clubs through articles in the *Lodestar* and keep everyone informed about ideas for youth that are written by Jim brace-Thompson in the *AFMS Newsletter*.

We thank our president, Eileen, SFMS Board, and especially Carolyn Daniels, editor of the *Lodestar* for all the encouragement and support given to us in order for us to carry out our responsibilities.

*Leona and Hugh Sheffield,
Youth Resources Co-Chairpersons*

**FORT DRUM CRYSTAL MINE
ROCK SWAP/FIELD TRIP**
Ft. Drum, Florida



Collect: Marine fossils, calcite, calcite in marine fossils, vertebrate fossils (rare).

Fee: \$20.00/day/person

\$8.00/day/child (15 and under). All minors must be accompanied by an adult at all times.

Swap tables will be set up, so bring your items to trade or sell.

Port-O-Lets will be provided.

Directions: From Ft. Drum going south on Hwy 441, turn left (east) on 304th Street. The mine will be on the left about 3 miles down the road. There will be people at the gate at 8:00 A.M. to collect money and liability waivers.



Pants, sturdy shoes/boots, gloves and protective eyewear are recommended. Bring tools, buckets/cloth bag, and newspaper to collect, carry and wrap fragile specimens. The collecting area can be extremely wet and muddy. Bring a change of clothing along with plenty of water and a towel.

November Weather Statistics:

Average Temps: 79 High - 61 Low
Record Temps: 91 High - 31 Low
Average Rainfall: 1.91 inches

For more information contact:
Eddie Rocks
fortdrumcrystalmine@yahoo.com
863.634.4579

2005 SFMS CONVENTION AND SHOWat 321.952.9647 or chrstnmlr@aol.com.

The Canaveral Mineral and Gem Society of Melbourne, FL will host the 2005 SFMS Annual Meeting and Convention on November 11 through 13, 2005. October is the time for everyone to be getting their registration forms in for this event. Plan to make arrangements early.

The convention events and meeting will be held at the Melbourne Airport Hilton, 200 Rialto Place, Melbourne, FL. Federation competitions and exhibitions will be displayed at the show site at the Melbourne Auditorium, 625 E. Hibiscus Blvd, Melbourne. The hours for the show are Saturday, November 12, 10 A.M.-5 P.M. and Sunday, November 13, 10 A.M.-4 P.M.

The Hilton Hotel has reserved guest rooms for Friday and Saturday nights. Special group rates are \$109 plus 10% tax per night for 1-4 people with the possibility of an upgrade for \$30 per night, based on availability. You should contact the hotel directly and identify yourself as a SFMS member at 321.768.0200. Reservations should be made in October as soon as possible.

Our dealer dinner is Friday night November 11, 2005 at 6 P.M. at the Melbourne Auditorium. This is a delicious pot-luck dinner provided by the Canaveral Club and free to all guests. This is always a delicious meal enjoyed by dealers, club members, and guests.

Saturday morning is the annual business meeting at the Hilton Hotel between 8 A.M. - 1 P.M. All federation business will be conducted at this time with refreshments at the break. While the meeting is in progress, the Federation Competition and Exhibition entries will be judged at the show. Saturday afternoon is time to enjoy the show and relax before an exciting evening.

The Saturday Evening Awards Banquet will be held at the Hilton Ballroom from 6 P.M. – 10 P.M. Our evening begins with time to meet and mingle with fellow club members. Then our dinner will consist of the hotel's finest cuisine with your choice of pan-seared salmon filet with a balsamic-port wine reduction, slow roasted prime roast of beef, hand carved served with au jus and horseradish or chicken cordon bleu, ham and cheese filled boneless chicken breast, baked to a golden brown and accompanied by an herb-cream sauce. All dinners are served with choice of soup or salad, choice of potatoes or rice, warm rolls and whipped butter, dessert, tea and coffee. We are privileged to have an excellent, exciting speaker from the Kennedy Space Center. Awards will be presented to the winners of the Saturday morning competitions and new federation officers will be installed.

Sunday morning, November 13, 2005 from 8 A.M. – 11 A.M. will be the Editor's Breakfast held in the Hilton Ballroom. A breakfast buffet will be served. After this the day is free to relax, enjoy the show and many activities and points of interest in the area.

Come enjoy the convention and stay an extra couple of days to enjoy the Space Coast and beautiful Florida beaches. Remember the Ruck's Pit Dig in Ft Drum, FL.. Details are available from your newsletter.

Directions to the Hilton: I-95 to the 180 Exit, go east on Rt 192 to Airport Blvd, turn left on Airport Blvd and go ½ mile to the Hilton on the right.

From US 1 go west on Rt 192 to Airport Blvd, turn right on Airport Blvd and go ½ mile to the Hilton on the right.

Chairperson and contact for the convention is Christine Miller

Local Attractions in the Melbourne Area

This is a great time to explore the Space Coast and Treasure Coasts of Florida. Think about going on the dig at the Ruck's Mine in Ft Drum to collect calcite crystals in fossilized clamshells. This is a day trip from Melbourne and has been arranged to coincide with the annual meeting. Details in the *Lodestar* (page 12).

A short drive north of Melbourne takes you to the Kennedy Space Center and Port Canaveral. The Space Center is open 9 A.M. – 5:30 P.M. daily. Admission per person ranges up to \$37 depending on the tour options taken.

The Sterling Casino ship docks in Port Canaveral and has twice daily sailings at 11 A.M. and 7 P.M. On Thursdays and Sundays it is also fun to watch the cruise ships arrive and depart from the port.

The weather in November should be perfect for a day at the beach. Melbourne Beach is just a few miles east of Melbourne and has a nice family beach. For surfing, head south a little to the Sebastian Inlet area (site of the national yearly competition). The Sebastian Inlet is known world wide for the excellent fishing and is accessible from the jetty on the north side. Located south of the Inlet but still part of the park is the McLarty Treasure Museum. This is the site of the survivors and salvage camp from the sinking of the 1715 Spanish Plate Fleet. The museum is open daily and contains many artifacts from the survivors of the fleet and the salvage crews from 1715 – 1719.

Bird watching is excellent from the Sebastian Inlet down through the Pelican Island National Wildlife Refuge. Pelican Island was the first National Wildlife Refuge ever formed. The lookout tower to view the island is wheelchair accessible. The town of Sebastian located 20 miles south of Melbourne on US Highway 1 is home to the Mel Fisher Treasure Museum. The museum is open daily and contains treasure from the 1715 fleet as well as from the Atocha, found in 1985.

While in Melbourne, take time to visit the Brevard Zoo and the Museum of Art and Science. Historic Downtown Melbourne is an area of boutiques, specialty shops and even a Jazz Club. On Friday evening the 11th of November, the streets of Historic Melbourne will be closed for the monthly evening street party.

There are over 50 golf courses in Brevard and Indian River counties to challenge our golf lovers.

Come visit us!!

Leslie Ann Wayment CM&GS Club Member



2005 Annual Meeting of the Southeast Federation of Mineralogical Societies, Inc.

Hosted By: Canaveral Mineral and Gem Society
November 12 & 13, 2005
In conjunction with our
29th Annual Parade of Gems

Name (for Badge) _____ (Check if Delegate)

Name (for Badge) _____ (Check if Delegate)

Name (for Badge) _____ (Check if Delegate)

Name (for Badge) _____ (Check if Delegate)

Address: _____ Phone: _____

Club Affiliation:

The Meeting, Banquet and Breakfast will be held at: **Hilton Melbourne Rialto Place**
200 Rialto Place
Melbourne, FL 32901
321-768-0200

We have reserved a block of rooms at the Hilton at reduced rates. You are responsible for your own reservation. You must identify yourself as a member of SFMS. Rates are \$109/night + tax, you may upgrade to a Jr. Suite for \$30/night additional. Reservations must be made by October 21, 2005. The Hilton currently provides a free shuttle for its guests, tipping encouraged.

The CM&GS has a traditional potluck Dealers Dinner Friday night for its members and Show Dealers at the Melbourne Auditorium. SFMS conventioners are invited to attend, but we need to know you plan to attend.

<i>Activity</i>	<i>Location</i>	<i>Cost/person</i>	# Of Persons	Payment Enclosed
Friday Dealers Dinner	Melbourne Auditorium	Free		None
Annual Business	Hilton Mel-	None		None
Annual Banquet Saturday 6pm-10pm	Hilton Melbourne Rialto Place	\$30.00/person (Includes tax & tip)	Prime Rib _____ # Chicken Cordon Blue _____ # Salmon _____ #	
Editors Breakfast Buffet Sunday 8am-11am	Hilton Melbourne Rialto Place	\$17.75/person (Includes tax & tip)		
Make Checks Payable to CM&GS (Canaveral Mineral and Gem Society) Send Registration and Payment to: Christine Miller 119 W. Laila Dr West Melbourne, FL 32904 321-952-9647 chrstnmlr@aol.com				Total Enclosed \$

**SOUTHEAST FEDERATION OF MINERALOGICAL SOCIETIES
ANNUAL SHOW – NOVEMBER 12 & 13, 2005
MELBOURNE, FLORIDA
HOSTED BY: CANAVERAL MINERAL & GEM SOCIETY**

APPLICATION FOR COMPETITIVE EXHIBITS

Name _____

Address _____

City _____ State _____ Zip _____

Phone No. _____ E-Mail _____

Division _____ Class _____ Exhibitor Group _____

(Consult AFMS Uniform Rules, 8th edition, updated, to correctly fill out these spaces)
The latest edition with updates may be downloaded form www.amfed.org/rules, click on “download rules”

A small number of club cases are available for loan. These will be allotted on a “first come” basis.

If your are furnishing your own case,
Please fill in accurate exterior dimensions _____ W _____ H _____ D

A short description of your exhibit _____

Maximum electrical power allowed for each exhibit is 150 watts. You may need to provide an extension cord.

Exhibitors must sign the following statement, except those entering Division E (Educational) – See AFMS UR Page E-2, Rule 17.9

I CERTIFY THAT ALL MATERIALS EXHIBITED IN COMPETITION ARE MY PERSONAL PROPERTY, AND THAT ALL WORKMANSHIP EXHIBITED WAS DONE BY ME, AS REQUIRED BY THE RULES.

Competitor’s Signature _____

Society _____

City & State _____

Club Officer’s Signature & Title _____

Date of Form _____ **Birth Date** _____ **(Junior Competitor only)**

**Mail to: Roy Deere
7041 Rodes Place
W. Melbourne, FL 32904**

Exhibits chairman must receive all completed forms no later than **NOVEMBER 1, 2005** (note new deadline)

Please use a separate form for each application. Reproductions of this form are acceptable.

October 2005

The Southeast Federation of Mineralogical Societies, Inc.

LOOKING AHEAD

2004/2005 REGIONAL FEDERATION SHOWS & CONVENTIONS

California Federation

Hosts: Calaveras Gem and Mineral Society
Angels Camp, California
June 9-10, 2006

Eastern Federation

Hosts: Gem and Mineral Society of Palm Beaches,
Inc.
West Palm Beach, Florida
November 18-19, 2006

Midwest Federation

Hosts: Midwest Mineralogical and Lapidary Society
Detroit, Michigan
May 12-14, 2006

Northwest Federation Annual Convention & Show

Hosts: Southern Washington Mineralogical Society
and Mt. Hood Rock Club
Longview, Washington
July 14-16, 2006

Rocky Mountain Federation Annual Convention & Show

Hosts: Stillwater Mineral and Gem Society
Stillwater, Oklahoma
June 9-11, 2006

South Central Federation Annual Convention & Show

Hosts: Austin Gem & Mineral Society
Austin, Texas
December 2-4, 2005

Southeast Federation Annual Convention & Show

Hosts: The Canaveral Mineral & Gem Society
Melbourne, FL
November 12-14, 2005

CLUB & SOCIETY SHOWS/SWAPS

(check with show contact for admission charges, if any)

October 1-2, 2005, Lexington, KY - Rockhounds of Central Kentucky. 15th Annual Show. National Guard Armory, Airport Road. Hours: 1st, 10:00 A.M.-6:00 P.M.; 2nd, 12:00 Noon--5: P.M. Contact: Bekki Miracle at (502) 868.0258.

October 7-9, 2005, Dallas, NC - Gaston County Gem & Mineral Society. 27th Annual Gem & Mineral Show. Dallas Park (Biggerstaff Park), right off Hwy 321, Hwy 279-Dallas Cherryville Highway. Hours: 7th & 8th, 9:00 A.M. - 6:00 P.M.; 9th, 10:00 A.M. - 5:00 P.M.

October 14-16, 2005, Knoxville, TN - Knoxville Gem and Mineral Society. 15th Annual Gem, Mineral and Jewelry Show. Kerbela Temple at 315 Mimosa Avenue. Hours: 21st & 22nd: 10:00 A.M. - 6:00 P.M.; 23rd, 11:00 A.M. - 5:00 P.M. Contacts: Travis Paris at 865.691.8228 and Eileen Price at 865.694.4071.

October 14-16, 2005, Huntsville, AL - Huntsville Gem and Mineral Society. 37th Annual Huntsville Gem and Mineral Show. Von Braun Center. Hours: 14th & 15th, 10:00 A.M. - 6:00 P.M.; 16th, 12:00 Noon - 5:00 P.M. Contact: Susan Burch (President) at 256.828.1727 or <jewelry_by_susan@yahoo.com>.

November 4-6, 2005, Reidsville, NC - Rockingham County Mineral Club. 14th Annual Show. Wentworth Recreation Center, intersection of Gibbs Road and Hwy 87. Hours: 4th & 5th, 10:00 A.M. - 6:00 P.M., 6th, 12:00 Noon - 5:00 P.M. Contact: Iris Conner @ 336.342.3958.

November 5-6, 2005, Winter Haven, FL- Imperial Bone Valley Gem, Mineral & Fossil Society. Gem, Mineral & Fossil Extravaganza! The Nora Mayo Hall - 500-3rd Street NW. Hours: 5th, 9:00 A.M.-5:00 P.M.; 6th, 10:00 A.M.-4:00 P.M. Show Contact: Susie Percefull, Show Chair @ 863-858-1846 or Misubrea@aol.com.

November 5-6, 2005, Ft. Pierce, FL - The St. Lucie county Rock and Gem Club. Annual Show. St. Lucie County Fairgrounds, Midway Road. Contact: Norm Holbert @ 772.873.0787.

November 11-13, 2005, Pascagoula, MS - Mississippi Gulf Coast Gem and Mineral Society. **CANCELLED DUE TO DAMAGE FROM HURRICANE KATRINA - SEE PAGE3.**

November 12-13, 2005, Melbourne, FL - Canaveral Mineral & Gem Society. 29th Annual "Parade of Gems" Show and Southeast Federation of Mineralogical Societies Annual Meeting. Melbourne Auditorium, 625 E. Hibiscus Avenue. Hours: 10:00 A.M. - 5:00 P.M. Show and Dealer Chairpersons: Bruce and Anita Lane @ 321.723.0742. Contact for SFMS activities is Bill Harr @ 321.777.1171.

The Southeast Federation of Mineralogical Societies, Inc.**October 2005**

November 18-20, 2005, Marietta, GA - The Cobb County Gem and Mineral Society. 20th Annual Gem & Mineral Show. Cobb County Civic Center, 548 South Marietta Parkway (intersection with Fairgrounds Road). Hours: 18th and 19th, 10:00 A.M. - 6:00 P.M. and 20th, 10:00 A.M. - 5:00 P.M. Contact: Mary Ingram, 770.427.1108.

November 25-27, 2005, Columbia, SC-The Columbia Gem and Mineral Society. 38th Annual Gem, Mineral, and Jewelry Show. South Carolina State Fairgrounds in the Moore Building, corner of Rosewood Dr. and Assembly Street. Hours: 25th, 10:00 A.M.-7:00 A.M.; 26th, 10:00 A.M.- 6:00 P.M.; 27th, Noon-5:00 P.M. Contact: Susan Shradler, 803.736.9317, ashradler@mindspring.com.

November 25 - 27, 2005, Mobile, AL- Mobile Rock & Gem Society. 11th Annual Jewelry, Gem & Mineral Show. Greater Gulf State Fairgrounds, Zeigler & Cody. Hours: 25th, 2:00 P.M.-7:00 P.M.; 26th, 9:00 A.M.-6:00 P.M.; 27th, 10:00 A.M.-5:00 P.M. Contact: Ed Harris, Show Chairman, 251.865.9157, email: ed_harris_jr@hotmail.com, website: www.geocities.com/mobilerockandgem/MRGChome.

December 2-4, 2005, Montgomery, AL - Montgomery Gem & Mineral Society. 35th Annual Gem, Mineral and Jewelry Show. Garrett Coliseum on Federal Drive. Hours: 2nd, 9:00 A.M. - 6:00 P.M.; 3rd, 10:00 A.M. - 6:00 P.M.; 4th, 11:00 A.M. - 5:00 P.M. Contact Jane Barkley at 334.277.2722 or Iris McGehee at 334.262.7275.

December 2-4, 2005, Spring Hill, FL - Withlacoochee Rockhound Gem and Mineral Society. 31st Annual Rockhound Gem and Mineral Show. Solvene American Club, County Line Road. Hours: 9:00 A.M. - 5:00 P.M. Contact: Jerry Johnson @ 352.688.7810. Dealers needed.

December 9-11, 2005, Norcross, GA - The Georgia Mineral Society. 12th Annual Holiday Show. North Atlanta Trade Center, 1700 Jeurgens Court. Hours: 9th and 10th, 10:00 A.M. - 6:00 P.M.; 11th, 12:00 Noon - 5:00 P.M. Contact: Kim Cochran @ 770.979.8331, email: decembershow@gaminerallorg, website: <http://www.gaminerallorg/december-show.htm>.

December 3, 2005, Auburndale, FL - Imperial Bone Valley gem, Mineral & Fossil Society, Inc. One Day Rock Gem & Fossil Tailgate Sale and Swap. North Carroll Road, just off U.S. Hwy 92. Take Exit 17 off SR 570 (toll road), turn west on Hwy 92 (toward Lakeland). Look for N. Carroll Road immediately past the Old Dixie Hwy traffic light, turn right and drive to show (at club shop) on left about 150 yards from Hwy 92. Use rear gate for entry. Hours: 8:00 A.M. - 5:00 PM. Contacts: Marte Dantzman at 863.428.1214 or Jane Davis at 813.754.1584. Email contact: stonepainter@gmail.com

December 10-11, 2005, Nashville, TN - Mid-Tennessee Gem & Mineral Society. 25th Annual Earth Treasures Jewelry, Gem, Mineral & Fossil Show. Tennessee State Fairgrounds. Hours: 10th, 9:00 A.M. - 6:00 P.M.; 11th, 10:00 A.M. - 5:00 P.M. Contact: Mary Sparks @ 615.485.0718.

January 20-22, 2006, Largo, FL - Pinellas Geological Society, Inc. and The Tumblers (youth club). 30th Annual Gem, Jewelry and Mineral Show and Sale. Largo Cultural Center, Parkside Room, 105 Central Park Drive. Hours 20th & 21st, 10:00 A.M. - 6:00 P.M., 22nd, 12:00 Noon - 5:00 P.M. Contact: Hugh Sheffield at 727.894.2440.

REMEMBER - To insure your show is listed here, send a written notice to the Lodestar Editor: Carolyn L. Daniels, 3660 Prince Way, Tucker, GA 30084-8317 or email at: dpdaniels@mindspring.com. ALL SFMS CLUBS ARE ALSO ENCOURAGED TO REGISTER THEIR EVENT LISTINGS ON THE SFMS WEBSITE AT: <http://www.amfed.org/sfms>. Choose "Submission Guidelines" under the SFMS Shows Column heading to find out how to apply.

ACTUAL ANALOGIES, SIMILES AND METAPHORS APPEARING IN HIGH SCHOOL ESSAYS

1. Her face was a perfect oval, like a circle that had its two sides gently compressed by a Thigh Master.
2. His thoughts tumbled in his head, making and breaking alliances like underpants in a dryer without Cling Free.
3. He spoke with the wisdom that can only come from experience, like a guy who went blind because he looked at a solar eclipse without one of those boxes with a pinhole in it and now goes around the country speaking at high schools about the dangers of looking at a solar eclipse without one of those boxes with a pinhole in it.
4. She grew on him like she was a colony of *e. coli* and he was room-temperature Canadian beef.
5. She had a deep, throaty, genuine laugh, like that sound a dog makes just before it throws up.
6. Her vocabulary was as bad as, like, whatever.
7. He was as tall as a six-foot-three-inch tree.
8. The little boat gently drifted across the pond exactly the way a bowling ball wouldn't.
9. McBride fell 12 stories, hitting the pavement like a Hefty bag filled with vegetable soup.
10. From the attic came an unearthly howl. The whole scene had an eerie, surreal quality, like when you're on vacation in another city and Jeopardy comes on at 7:00 p.m. instead of 7:30 p.m.
11. Her hair glistened in the rain like a nose hair after a sneeze.
12. The hailstones leaped from the pavement, just like maggots when you fry them in hot grease.
13. Long separated by cruel fate, the star-crossed lovers raced across the grassy field toward each other like two freight trains, one having left Cleveland at 6:36 p.m. traveling at 55 mph, the other from Topeka at 4:19 p.m. at a speed of 35 mph.
14. John and Mary had never met. They were like two hummingbirds who had also never met.
15. He fell for her like his heart was a mob informant and she was the East River.
16. Even in his last years, Grandpappy had a mind like a steel trap, only one that had been left out so long, it had rusted shut.

(from an email to the editor from her sister-in-law)

Lodestar Subscription

Name:		Telephone:	
Club/Society Affiliation:			
Mailing Address:		Email Address:	
City:	State:	Zip Code (plus four):	
Special Interests:			
Check all that apply: New Subscription Renewal Address Change			
Subscription rates are \$10.00 per year for 10 issues. (Not published in June or August) - Make checks payable to Southeast Federation - Mail to SFMS Editor: Carolyn L. Daniels, 3660 Prince Way, Tucker, GA 30084-8317			
Recorded:	Date Entered:	To Treasurer:	

**THE SOUTHEAST FEDERATION OF
MINERALOGICAL SOCIETIES, INC.**
Carolyn L. Daniels, Editor
3660 Prince Way
Tucker, Georgia 30084-8317



**Non-Profit
U. S. Postage Paid
Tucker, Georgia
Permit No. 317**