

2005 SFMS Workshop Schedule

The 2004 SFMS workshop season is over and the Directors for next year have been appointed: **David and Barbara Tuttle** will direct the three sessions at Wildacres in North Carolina next year. David is Past President of the Southeast Federation. They are members of the Jacksonville Gem and Mineral Society and have been active in the Federation for many years.

Pat Davis has been appointed Director for the SFMS sessions at the William Holland School in Young Harris, Georgia. Pat has previous experience as Registrar at both workshop sites. She is from St. Petersburg, Florida and is a member of the Sun Coast Gem and Mineral Society where she has held several offices including the club Education Chair.

To give everyone time to plan their vacation next year we are announcing the dates of three of the five SFMS workshops. The dates of the August and September sessions at Wildacres have not been scheduled yet, but they will be within a week or two of the corresponding weeks this year. Here is what our schedule looks like:

- Session 1. Wildacres Retreat, NC – April 18-24, 2005
- Session 2. William Holland School, GA – June 12-18, 2005
- Session 3. Wildacres Retreat, NC – Last half of August 2005
- Session 4. Wildacres Retreat, NC – Last half of September 2005
- Session 5. William Holland School, GA – October 9-15, 2005

Workshop Registrars and Directors are appointed on alternate years for two-year terms. In this way we will always have experienced registrars or directors working with the new appointees. Next year Kerri and Bill Wetzel will continue as Registrars at Wildacres and Dana and Ray Gonzales will continue at William Holland.

Wildacres Directors Deborah and Jerry Miller have done a great job at Wildacres for the past two years and their efforts will still be appreciated next year since they have been working with the new directors to complete the 2005 curriculum that is shown to the right.

We appreciate the efforts of Polly Carman and her late husband Ron who shaped the class selection at Wildacres. Polly is now stepping down as Director after another stint at William Holland but she is working with Pat Davis to complete the planning for the 2005 season.

The SFMS 2005 Workshop schedule shown to the right is being announced so you can start your planning. Detailed class descriptions and instructor Bio's will be presented in November.

*Fred Sias
SFMS Education Chair*

Session 1, April 18-24, 2005 at Wildacres

Adv/Beg Cabochons	Gerald Burnham
Advanced Silver	Dan Haga
Advanced Wirecraft	Ruth Ann Moore
Beginning Silver	Bill Cady
Beginning Wirecraft	Lisa Roberts
Chainmaking	Dee Conybear
Faceting/Intarsia	Tom Wilke
Polymer Beads	Marilyn Jobe
Wax Design	Tim/Janet Steeper

Session 2, June 12-18, 2005 at William Holland

Advanced Silversmithing	Dan Haga
Beginning Chainmaking	Dee, Bill Conybear
Beginning Faceting	David Lonser
Beginning Silversmithing	Allen Jewell
Cabochon Cutting	Gene Baxter
Channelwork	Don Monroe
Fused Glass	Addy DePietro
Intermediate Wirecraft	Betty Baxter
Lost-wax Casting	Bill Harr
Opal Cutting	Joe DePietro
Stained Glass	Julia Larson
Wire Sculpture	Lisa Roberts

Session 3, August 2005 at Wildacres

Gem Appreciation	Ben Smith
Wire Sculpture	Lisa Roberts
Beginning Wire	Ruth Ann Moore
Bead Design	Addy DePietro
Advanced Metalsmithing	Jeff Sheer
Raku Pottery	Cindy McDowell
Precious Metal Clay 1	Ken/MaryAnn Devos
Beginning Faceting	Dave Lonser
Opals	Joe DePietro
Southwest Silversmithing	Dan Haga
Lost-Wax Casting	Fred Sias

Session 4, September 2005 at Wildacres

Advanced Goldsmithing	Dan Haga
Beginning Faceting	Tom Wilke
Beginning Silver	Cathy Cawthorne
Beginning Wire	Lisa Roberts
Forging Jewelry	Catherine Larose
Gem Appreciation	Ben Smith
Opal Cutting	Sarah Lee Boyce
Precious Metal Clay 2	Ken/MA Devos
Raku Pottery	Cindy McDowell
Stained Glass	Julia Larson

Session 5, October 9-15, 2005 at William Holland

Beginning Faceting	David Lonser
Beginning Silversmithing	Mack Thornton
Beginning Wirecraft	Lisa Roberts
Chain	John Runkle
Fused Glass	Addy DePietro
Intermediate/Advanced Wirecraft	Dawn Thornton
Jewelry Repair	Dan Haga
Lost-wax Casting	Fred Sias
Mineral Identification	Bruce Siegfried
Opal Cutting	Joe DePietro
Seed Beading	Joe Harrison

NOTES FROM WILLIAM HOLLAND SFMS WEEK, JUNE 13-18, 2004

By Chelsey Tyler,

SFMS Junior Workshop Scholarship Recipient

Day 1 (Sunday): My mom, sister and I arrive at William Holland just before dinner is served. We check in and get everything out of the car, and then go downstairs to dinner. After dinner I found out that there are three other students in my lost wax casting class. We go down the hall to the classroom to learn what we're going to do this week. I would be excited and ready to get started if I wasn't so tired!

Day 2 (Monday): The next day we learn how to solder wax together (I still think 'solder' is a bit of overwording, but...), and then we get started on some real projects. I



get a shark ring and a lion's-head ring ready for investing, and then it's time to start some bigger stuff. I have wanted to make a wolf's-head ring ever since my first or second class at William Holland, when I saw a wolf ring with amethyst eyes. So Mr. Iacullo gives me a chunk of carving wax to work with, and away I go! Well, not quite so quickly, perhaps. Carving wax is tough stuff. Later

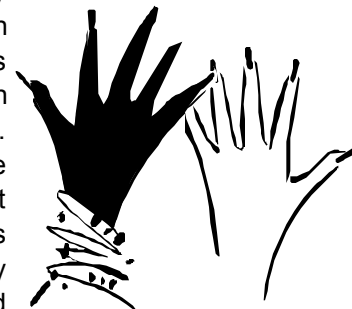
we learn how to pour investment, and then we let those projects sit and begin some others. This evening's entertainment is provided by Herrick Jeffers, who tells several stories. Afterwards my sister and I work on the puzzle in the puzzle room, and then it is bedtime.

Day 3 (Tuesday): It's time to pour molten metal into our molds! This is the fun part, getting to play with the torch. Mr. Iacullo was up all night watching the kiln (bless him!), and shows us how to cast the metal as soon as everyone arrives at the classroom. After watching a few of the other students work, I believe I am ready to try my hand at it - but my pieces are further back in the kiln, and it is cookie time! This evening is the auction night, and my sister and I (as the youngest students) are recruited to help as runners.

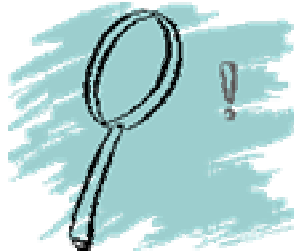


Day 4 (Wednesday): By Wednesday I am tired of working on my wolf ring constantly. I get a pre-fabricated wax pattern ready for the kiln, then go back to working on my wolf. I take breaks every now and then to work on a falcon-and-snake pendant I designed based on illustrations in a book of Russian folktales. The wax falcon I put together looks more Colonial American than Russian, but I decide to fix that later. After lunch I go back to the classroom and work on a few things, but as Wednesday is break day, I quit at about two o'clock and go down to Gloria's Rockshop. Afterward, my mom, sister, some new friends, and I go out for dinner, and then it's our annual trip to Blairsville for a movie.

Day 5 (Thursday): On Thursday I find a way to make my falcon look less colonial! As Friday is going to be the last burnout, I am busy finishing off the various projects. Determined to make every moment count, I even start on another project this afternoon...after I have gotten everything else ready, that is. Tonight is tailgating inside the lunchroom. Since I spent most of my money at Gloria's and the auction, I buy only one beautiful seed-beaded bracelet from another student.



Day 6 (Friday): Friday we pour our last projects, and clean up. As we are, of course, the most efficient and organized class, we are one of the first ones finished. From now on, whenever I go to William Holland, I am going to search for the opal Mr. Iacullo said he dropped on the floor. It's a good way to get everyone to help clean, though -- say that the one who finds the stone keeps it.



By the end of the week, with only a few mishaps, I have made a shark ring, a lion ring, and a pendant, and phoenix pendant. Perhaps it's good to be the youngest at William Holland - amongst all those friendly folk who took my sister and me under their collective wing, I gained many gran -- ah...brothers and sisters!

NOTES ON THE MAYO EDUCATIONAL FOUNDATION



Did you know that as of August 2004 the Mayo Educational Foundation, Inc. has awarded **sixty-one** scholarship grants? Since the first grant in 1985, a total of **\$122,300** has been given to **forty-two** students seeking degrees in earth science fields. (*Actually, \$123,300 has been awarded, but one student unable to complete her term returned \$1,000.*) The largest grant was \$4,000, the smallest \$800.



Do you know the Mayo Educational Foundation Inc. is a separately-incorporated division of the Southeast Federation? It is not financed by SFMS. Dues paid to SFMS do **not** help provide scholarships or support the MEFI. It is funded SOLELY by donations and gifts made directly to the Mayo Educational Foundation.

As per the MEFI Bylaws, the scholarship grants are paid from interest on the MEFI accounts. The Bylaws state: "The principal funds shall not be used for awards." All donations and gifts to the Mayo Educational Foundation are deposited, and ONLY the interest is used. Thus when interest rates are low, there are less funds available for scholarships.



Did you know applicants for MEFI scholarships must provide a letter of recommendation from a SFMS member club? The following clubs have 'sponsored' students:

Alabama Mineral & Lapidary Society - 1
 Augusta Gem & Mineral Society - 1
 Carroll County Gem & Mineral Society - 1
 Columbia Gem & Mineral Society - 3
 Georgia Mineral Society - 5
 Greensboro Mineral Club - 1
 Knoxville Gem & Mineral Society - 13
 Mississippi Gem & Mineral Society - 1
 Mobile Rock & Gem Society - 6
 Montgomery Gem & Mineral Society - 2
 North Mississippi Gem & Mineral Society - 2
 Pearl River Rock Club - 1
 Pendleton District Gem & Mineral Society - 1
 Roanoke Valley Mineral & Gem Society - 1
 Southern Appalachian Mineral Society - 1
 Suncoast Gem & Mineral Society - 1
 Tennessee Valley Rock & Mineral Club - 1
 Western South Carolina Gem & Min Society - 1



Did you know the following schools had MEFI scholarship recipients?

Appalachian State University - 1
 Auburn University - 3
 Clemson University - 1
 Georgia Institute of Technology - 3
 Georgia State University-Atlanta - 2
 Guilford College - 1
 Memphis State (now University of Tennessee) - 1
 State University of West Georgia - 1
 Sul Ross University - 1
 University of Georgia-Athens - 1
 University of Mississippi - 3
 University of South Alabama - 4
 University of South Carolina-Columbia - 3
 University of South Florida-Tampa - 1
 University of Southern Mississippi - 2
 University of Southern Mississippi-Hattiesburg - 1
 University of Tennessee-Knoxville - 13
 Virginia Institute of Technology - 1

**MAYO EDUCATIONAL FOUNDATION, INC.
MEMORIALS & HONORS DONATIONS**

A memorial or honor donation to MEFI can pay tribute to or recognize someone special to you or your club. Your tax-deductible contribution also offers help for deserving college students to further their education in the earth sciences. An appropriate notification will be sent to the person or family you designate, advising them of your thoughtful gift.

MEMORIALS: Your Gift Memorial provides a thoughtful and dignified means of perpetuating the memory of a friend or loved one.

HONORS: You can contribute in honor of a loved one, a friend, business associate, club member or club. It is an excellent way to acknowledge anniversaries, birthdays, convalescence, holidays or other events.

Donor: _____ Amount: _____

Address: _____

City: _____ State: _____ Zip: _____ Phone: _____

How do you wish
the card signed? _____

Check one: In Memory of: _____ In Honor of: _____

Occasion: (*birthday, anniversary, speedy recovery, etc.*) _____

Send MEFI notification to:

Name: _____

Address: _____

City: _____ State: _____ Zip: _____ Phone: _____

Make check payable to : **MAYO EDUCATIONAL FOUNDATION, INC.**
Mail to Frank Decaminada, MEFI Treasurer, 795 Nile Drive, Alpharetta, GA 30022

Plan Early to Attend

**SFMS Annual Meeting and Banquet
December 11, 2004**

Hosted by The Georgia Mineral Society, Inc.

**Location: Admiral Benbow Inn
2955 Highway 317
Suwanee, Georgia 30024**

**December 11, 2004
Registration Begins at 8:30 am
Business Meeting at 9:00 am
Banquet at 7:00 pm**

**I-85 North of Atlanta, Exit # 111
To Guarantee a Reduced Room Rate the
Reservation Deadline is November 19, 2004**

The special room rate for SFMS Meeting or Banquet attendees is \$49.95 plus tax, per night. Please make your reservations directly with the Admiral Benbow Inn in Suwanee. To confirm this rate please reference your affiliation with the SFMS when making reservations. The following methods for reservations are available:

Telephone 770.945.4921

Fax 770.945.0440

or email to mgr@admiralbenbowsuwanee.com

Free Continental Breakfast

R V hookups are available at the Jones R V Park, 2200 Willowtrail Parkway, Norcross, 30093. Phone: 770.923.0911, Fax: 770.381.2142 or email to: Jonesrvpark@earthlink.com.

The dinner buffet will offer a choice of London Broil with Sherry Mushroom Sauce or Boneless Chicken Breast in a Marsala Wine Sauce, Whipped Potatoes with Gravy, Glazed Sliced Carrots, Squash Medley Stir-fry, Tossed Salad, Cole Slaw, Rolls with Butter, Carrot Cake, Peach Cobbler, with Coffee, Decaf, or Iced Tea. The cost is \$ 21.00 per person. Please use the Reservation Form. The Guest Speaker will be Julian Gray. The banquet host and hostess are Olin and Jeanette Banks.

The Editor's Breakfast menu offers Juice, Coffee, Mixed Fruit Bowl with Yogurt Topping, Fluffy Scrambled Eggs, Bacon, Sausage, Biscuits, Gravy, Hashbrowns, Assorted Donuts, and Pastries. The Editor's Breakfast Hostess is Carolyn Daniels.

If you have questions, please contact the Annual Meeting General Host Chair, Joan White, GMS President, at 770.478.5734 or jowhite@bellsouth.net.