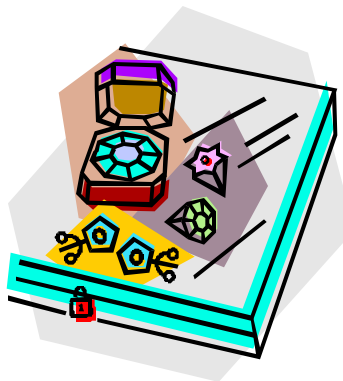


**WILDACRES REPORT**

Are you free the week of September 13-19, 2004? Would you like to spend a week at a beautiful mountain top resort? Wildacres still has openings. The mountain weather is pleasant this time of year. You can get room, board, and expert lapidary instruction for only \$260. Each class has additional fees that you can check on the web site at [www.amfed.org/sfms](http://www.amfed.org/sfms).

The classes still available are:

**Gem Appreciation** taught by Ben Smith. His class in August learned an enormous amount of information. They gave Ben rave reviews.



**Lost Wax Casting** with John Iacullo is great class to learn how to make your own jewelry. John's class is almost full.

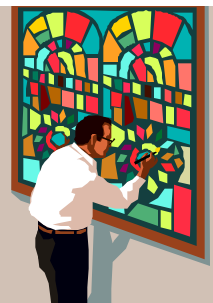


**Raku Pottery** taught by Cindy McDowell. Her class looked like it was having a great time. They made great projects and had fun playing in the clay.

If you have a lot of experience with silversmithing, I have a great teacher for you. Dan Haga is teaching our **Advanced Silversmithing** class.

The Devos are going to be there to teach **Precious Metal Clay (PMC), Level 2**. This is a great chance to get Level 2 certification. The projects from PMC are always great.

There is only one slot left in the **Stained Glass** class. This has been a class that people have been asking for and Julia Larson is teaching it for us this year.



If you would like to join us or need more information, please contact us as soon as possible at [wwetzel@earthlink.net](mailto:wwetzel@earthlink.net) or telephone at 864. 306.6749.

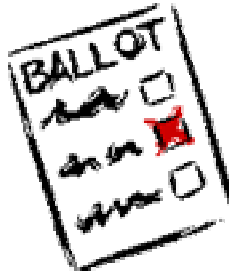
Bill and Kerri Wetzel  
Wildacres Registrars

**SFMS LONG RANGE PLANNING COMMITTEE**

SFMS members may submit suggestions and recommendations to the Long Range Planning Committee for consideration prior to October 15, 2004.

John M. Wright, Chairman  
3304 Nottingham Rd.  
Ocean Springs, MS 39564  
[osjw@datasync.com](mailto:osjw@datasync.com)

**NOMINATIONS FOR SFMS OFFICERS**



The following individuals are nominated by the SFMS nominating committee for open officer positions in 2005:

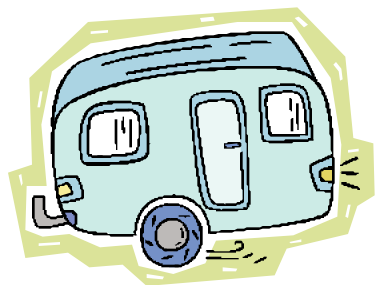
- President - Eileen Price
- 1st Vice President - Ann Monroe
- 2nd Vice President - Buddy Shotts
- Secretary - Betty James
- Ass't Treasurer- David Katts
- Editor - Carolyn Daniels

Elections for the above positions by the Federation Board of Directors will occur at the 2004 Annual Meeting in December 2004.

Ron Denton  
Nominating Committee Chair

**CLASS OPENINGS FOR WILLIAM HOLLAND LAPIDARY SCHOOL  
October 10-16, 2004**

Just a little announcement that we are expecting a full house during the October Workshops at the William Holland Lapidary School. However, there are class openings still available in Glass Bead Making, Seed Beading and Wirecraft Sculpture for **DAY STUDENTS** or **CAMPERS** only.



Some Hotels in the Young Harris/Hiwassee area are the Fieldstone Inn, Holiday Inn Express and Lake Chatuge Lodge. There may be others we are unaware of.

Dana and Ray Gonzalez  
6226 Seaton Drive, Columbus, GA 31909  
Phone - 706-327-447; email [drg@mchsi.com](mailto:drg@mchsi.com)

September 2004

The Southeast Federation of Mineralogical Societies, Inc.

## Lawsuit to Challenge New Forest Service Regulations

from Robert Cranston



The Forest Service has been busy lately, promulgating rules and regulations that will negatively impact small miners and prospectors. Public Lands for the People (PLP) is taking action to put a stop to it.

In "Forest Occupancy Decision Stands-US Forest Service Withdraws Appeal," (January 2004), we reported on the Lex-Waggener decision (US v. Ronald O. Lex and Ken Waggener; CR S-01-559 LKK; May 14, 2003).

In this case, Judge Lawrence K. Karlton, US District Court in Sacramento, reversed a lower court decision which wrongfully concluded that the miners were required to file a Notice of Intent for occupying their mining claim for more than 14 days in California's Klamath National Forest.

Judge Karlton said that section 36 of the Code of Federal Regulations (CFR), subsection 261, does not apply to miners who are camping on their claims while engaged in activities related to mining, rather it was meant to cover recreational activities. He stated, "As the regulations are currently structured, so long as no earth moving equipment or tree-cutting is involved, a miner can camp on his claim indefinitely..."

The Forest Service, fearing a loss of control that they never legally possessed, published an interim rule to address the above issue, under 36 CFR 228, in the Federal Register on July 9, 2004. The Federal Register Notice is entitled, "Clarification as to When a Notice of Intent and/or Plan of Operation Is Needed for Locatable Mineral Operations on National Forest System Lands."

According to the Federal Register notice, the emergency rule will be effective August 9, 2004, though comments will be accepted until September 7, 2004.

The Forest Service states they will soon require a "Notice of Intent" in any situation in which a mining operation causes a surface disturbance, regardless of whether that disturbance is caused by mechanized earth moving equipment or the removal of timber."

"After a Notice of Intent is submitted, the District Ranger determines whether the proposed operations will likely cause a significant disturbance of surface resources. If the determination is that the proposal will likely cause a significant disturbance of surface resources, the operator is notified that a plan of operations is required."

It is our opinion that the emergency rule would place severe restrictions on small operators if it were allowed to stand. Small miners, at the very least, would be subjected to the time and expense involved with the filing of a Notice of Intent for a minimal disturbance. The Forest Service cannot currently respond to applications in a timely manner, and delays would be inevitable if they receive hundreds or even thousands of Notices. Worse yet, some miners could be subjected to the long delays and excessive costs involved with a Plan of Operation and financial guarantees (bonding) for minimal disturbances, all at the discretion of a District Ranger who may or may not be favorable to mining. Merely bringing camping equipment onto a mining claim could be considered a significant disturbance in the mind of a District Ranger.

We have reviewed the emergency interim rule with Public Lands for the People (PLP). Jerry Hobbs, president of PLP stated there are numerous avenues open to challenge the interim rule. These include non-compliance with the Administrative Procedures Act, National Environmental Policy Act, Regulatory Flexibility Act, Paperwork Reduction Act, and others. After much discussion, it appears the best course of action is to file suit against the Forest Service to stop the interim rule, and a mining attorney has already been retained.

This should be a concerted effort on behalf of miners and prospectors, rather than a disjointed effort involving lawsuits filed by small entities with limited funds. Several mining and prospecting companies have already started the fundraising effort, including ICMJ's Prospecting and Mining Journal, donating thousands of dollars to PLP to pay for the legal fees that will be incurred in this case.

Special thanks goes to Keene Engineering for starting the ball rolling with a \$5,000 donation.

Much more will be needed. I encourage you to support this effort personally, and by bringing it to the attention of any clubs or associations to which you belong.

I have personally met with the PLP board on several occasions. I have been very impressed with their knowledge of rules and regulations, and the ability of their members to apply this knowledge to successfully litigate government agencies. I encourage all miners and prospectors to support their efforts on behalf of all of us.

Contributions can be sent to: Public Lands for the People, 3700 Santa Carlotta St., La Crescenta, CA 91214.

A direct link to the Federal Register notice can be found on our website [www.icmj.com](http://www.icmj.com) under the Pending Rules, Regulations Projects section. The Federal Register notice can also be located online at [www.regulations.gov/freddocs/04-15483.htm](http://www.regulations.gov/freddocs/04-15483.htm).

Concerned readers in need of further information can contact: Sam Hotchkiss, Minerals and Geology Management Staff, at 703-605-4852.

Comments can be sent to:

e-mail [35cfr228a@fs.fed.us](mailto:35cfr228a@fs.fed.us).

fax: 703-605-1575

or mailed to:

Forest Service, USDA  
Attn: Director, Minerals & Geology  
Management Staff (2810)  
Mail Stop 1126  
Washington, DC 20250-1125

from *A.F.M.S. Newsletter* (9/04)

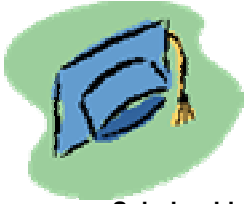
## 2004 SFMS DIRECTORY CORRECTIONS

**Pages 1,2,3,15 (Cobb County Gem & Mineral Society), and 16 (twice-Georgia Mineral Society):** Frank Decaminada's telephone number should be: 770.992.8309.

**Pages 1 and 7:** Polly Carman's email address is now: [carmanrp@starnetdial.net](mailto:carmanrp@starnetdial.net).

**Page 1:** The new Florida State Director is Beryl Ferguson (see page 2 of this issue of *Lodestar*.)

from various submittals to the editor



### 2004/2005 MAYO EDUCATIONAL FOUNDATION, INC. SCHOLARSHIP AWARDS

The Directors of the Mayo Educational Foundation, Inc. (MEFI) have completed applicant evaluations and have awarded grants for the 2004-2005 school year as follows:

<u>Scholarship</u>	<u>Scholar</u>	<u>Amount</u>	<u>Institution</u>	<u>Sponsor</u>
Frank Mayo	Keith Alan Milam	\$2,000	University of Tennessee	Knoxville (TN) Gem and Mineral Society
Vesta Mayo	Donna Khallouf	\$1,950	Georgia State University	Georgia Mineral Society
Carolyn Mayo Randall	Benjamin Tanner	\$1,850	University of Tennessee	Knoxville (TN) Gem and Mineral Society
Winnifred Mayo	Lorri D. Dukes	\$1,600	State University of W. Georgia	Carroll County (GA) Gem and Mineral Society

Our forms ask the applicant to describe their "Proposed Occupation/Profession" and here are their responses:

**Mr. Milam:** "Planetary Geologist - teaching and doing research at an academic institution while participating in spacecraft missions (particularly to Mars)." His PhD project involved thermal emission characteristics of plagioclase feldspars related to the geology of Mars.

**Ms. Khallouf:** "Research and education." Her graduate work was on the origin of jasperite in the Ermont Thrust Zone of Western Montana, now focusing on the relationship of the Bitterroot Mylonite Zone and Sapphire Tectonic Block.

**Mr. Tanner:** "... become a professor at a small college where I can teach classes and continue my research." A graduate student, he has been researching the sediment carbon isotope record in salt marshes in order to reconstruct ancient climate.

**Ms. Dukes:** "Middle School Earth Science Teacher." Currently a junior, she hopes to captivate the attention of her students and inspire learning about the earth sciences.

A total of **\$7,400** was available for this year's grants, representing the interest income from the MEFI investments. As usual, we wish it had been more.

Please urge your club to consider a donation to the MEFI. Remember - this is an investment in the future of earth science and our hobby. Thank you! (*ed - A Memorials and Honors Donation Form is provided on the next page.*)

*Diane Dare, MEFI President 2004*

#### Club Newsletter Editors:

My name is Dan Imel. For those of you who don't know me, I'm the Editor for SCRIBE, an organization for newsletter editors. Every year we issue a new CD full of newsletters from several different rock clubs along with articles, cartoons, clipart, useful freeware software, etc. At the moment we have over 40 clubs e-mailing me their newsletters. We've sold over 300 copies this year so far, it's proven to be very popular with editors. It's not a profit item for us; we only charge enough to cover our costs. For example, this year the price is \$1 at a federation Editor's Breakfast and \$2 by mail. Hardly a profit item.

Now, for why I'm writing. This is blatant begging. I would love to include as many different club newsletters as I can on the next CD. This is your chance to get your club noticed by other clubs and help your fellow editors. All



without costing your club money to mail exchange newsletters.

You don't have to be a member of SCRIBE to have your newsletter or other items included on the CD. The only thing I request is that you send it to me in an electronic form I can read. PDF files are the best but I can also read and convert Publisher, Word, WordPerfect and quite a few other PC formats. Send as many different months, even past years, as you can, we'd like to keep the CD growing.

You can e-mail them to me or send a CD/diskette. Either is fine. My e-mail is [lapidry@aol.com](mailto:lapidry@aol.com) and my address is Dan Imel, 4 Lanaray Park, Fairport, NY 14450-8443. If you have any questions, feel free to contact me. I would love to include your club's newsletter on the 2005 CD.

*from an email from Dan Imel*

**MAYO EDUCATIONAL FOUNDATION, INC.  
MEMORIALS & HONORS DONATIONS**

A memorial or honor donation to MEFI can pay tribute to or recognize someone special to you or your club. Your tax-deductible contribution also offers help for deserving college students to further their education in the earth sciences. An appropriate notification will be sent to the person or family you designate, advising them of your thoughtful gift.

**MEMORIALS:** Your Gift Memorial provides a thoughtful and dignified means of perpetuating the memory of a friend or loved one.

**HONORS:** You can contribute in honor of a loved one, a friend, business associate, club member or club. It is an excellent way to acknowledge anniversaries, birthdays, convalescence, holidays or other events.

Donor: \_\_\_\_\_ Amount: \_\_\_\_\_

Address: \_\_\_\_\_

City: \_\_\_\_\_ State: \_\_\_\_\_ Zip: \_\_\_\_\_ Phone: \_\_\_\_\_

How do you wish  
the card signed? \_\_\_\_\_

Check one: In Memory of: \_\_\_\_\_ In Honor of: \_\_\_\_\_

Occasion: (*birthday, anniversary, speedy recovery, etc.*) \_\_\_\_\_

Send MEFI notification to:

Name: \_\_\_\_\_

Address: \_\_\_\_\_

City: \_\_\_\_\_ State: \_\_\_\_\_ Zip: \_\_\_\_\_ Phone: \_\_\_\_\_

Make check payable to : **MAYO EDUCATIONAL FOUNDATION, INC.**  
Mail to Frank Decaminada, MEFI Treasurer, 795 Nile Drive, Alpharetta, GA 30022

## SFMS 2004 Wildacres Workshop at Wildacres Retreat, Little Switzerland, NC

### 2004 Workshop Dates

April.....Monday, April 19 to Sunday, April 25, 2004  
 August....Monday, August 23 to Sunday, August 29, 2004  
 September.....Monday, Sept. 13 to Sunday, Sept. 19, 2004

**Wildacres Retreat** is a conference center dedicated in 1946 by I.D. Blumenthal and Madolyn Blumenthal of Charlotte, NC, to the improvement of human relations. It is situated on 1400 acres at an elevation of 3,300 feet atop a mountain called Pompey's Knob. It is in Little Switzerland, approximately half way between Asheville and Blowing Rock, NC just off the Blue Ridge Parkway.

There are two lodges, a dining hall, where meals are served family style, a library/auditorium building, mineral and lapidary shops plus a pottery studio.

### Fees

**Lodge Accommodations:** \$260 per person, including meals. **Day Students:** \$115 per person, no meals are included.

### Registration Procedures

Applications from members of SFMS clubs will be accepted first; however, members of other AFMS clubs may apply and will be scheduled following SFMS applicants.

Applications for the April session will be accepted beginning on February 16, 2004, and on May 3, 2004 for the August and September sessions. The postmark date on or after these dates determines the order of acceptance. First-time attendees have an extra priority.

Students under age 18 are welcome, but they must be accompanied by a responsible adult and must be approved by the workshop director and instructor.

### Reservation Deposit

A deposit of 50% of the registration fee must accompany all applications. The full amount may be remitted with the application if the applicant wishes. (It is easier for the Registrar.) The balance is due 4 weeks before the workshop begins. No reminders will be sent.

### Cancellation Policy

There is a \$25 nonrefundable charge to cover administrative costs. An additional \$25 charge will be assessed for cancellations made less than 4 weeks before a session begins. No refund will be returned for cancellations by the student within 7 days of the start of a session.

\*Note: Advanced courses with prerequisites are designated with an asterisk in the course listing to the right.

### Workshop Directors

Jerry and Deborah Miller 805 Roanoke Dr, Cary, NC 27513  
 Phone: 919-467-6613 Email: [jerry.miller@e-hps.com](mailto:jerry.miller@e-hps.com)

### Workshop Registrars

Kerri and Bill Wetzel 5010 Sunset Drive, Easley, SC 29642  
 Phone: 864-306-6749 Email: [wwetzel@earthlink.net](mailto:wwetzel@earthlink.net)

### Session 1: April 19-25, 2004

Cabochons	Gerald Burnham
Beginning Faceting and Intarsia	Tom Wilkie
Glass Bead Making	Marilyn Jobe
*Gold Fabrication	Dan Haga
Precious Metal Clay (1 & 2)	Ken and Mary Ann Devos
Raku Pottery	Sarah House
Seed Beading	Jo Harrison
Silversmithing, beginning	Allen Jewell
Wirecraft, beginning	Lisa Roberts

### Session 2: August 23-29, 2004

Beading and Design, traditional	Addy DePietro
Chainmaking, beginning	Carole Boyle
*Faceting, intermediate	Ken Reed
Gem Appreciation	Ben Smith
Glass Bead Making	Marilyn Jobe
Lost-Wax Casting, beginning	Fred Sias
*Metalsmithing, advanced	Jeff Sheer
Opal cutting	Joe DePietro
Precious Metal Clay, beginning	Ken and Mary Ann Devos
Raku Pottery	Cindy McDowell
*Wirecraft, intermediate	Betty Baxter

### Session 3: September 13-19, 2004

Lost-wax Casting	John Iacullo
Faceting and Intarsia	Tom Wilkie
Seed Beading	Kathy Morris
Gem Appreciation	Ben Smith
Opal cutting	Sara Lee Boyce
*Precious Metal Clay (Level 2)	Ken and Mary Ann Devos
Raku Pottery	Cindy McDowell
*Silversmithing, advanced	Dan Haga
Silversmithing, beginning	Cathy Cawthorne
Wirecraft, beginning	Lisa Roberts
Stained Glass	Julia Larson